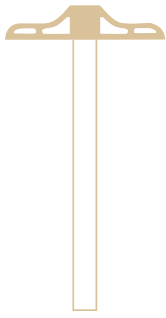


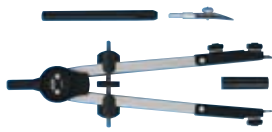
# A.I. Friedman

DRAFTING, DRAWING,  
MEASUREMENT



<b>PRESENTATION</b>	Portfolios, Presentation Cases, Binders, Storage, Sheet Protectors, Job Jackets	<b>3</b>
<b>BINDING SYSTEMS</b>	Unibind Thermal Binding, Plastic Coil, Wire Binding, Covers	<b>29</b>
<b>DISPLAY</b>	Banner Stands, Display Easels, Exhibits, Backlight Panels, Sign Holders	<b>34</b>
<b>FRAMING</b>	Metal Frames, Wood Frames, Easel Backs, Pre-Cut Mats, Hangers	<b>41</b>
<b>COMPUTER GRAPHICS</b>	Apple Computer, Wide Format, RIPs, Epson, Hewlett-Packard, Xerox, Latran, Magic, Azon, Laser & Inkjet Supplies, Color Copier & Laser Paper	<b>54</b>
<b>COLOR REFERENCE</b>	Pantone, Light Boxes, Color Corrected Viewers, Trumatch, Toyo, Xrite	<b>84</b>
<b>PAPER, BOARDS, ACETATE</b>	Pads, Mounting Boards, Mat Boards, Foam Boards, Color Papers, Films, Drawing Paper	<b>94</b>
<b>TAPES, ADHESIVES, PACKAGING SUPPLIES</b>	Xyron, Seal, Dry Mount, Laminating, Spray Adhesives, Spray Booths, Glues, Hook & Loop	<b>111</b>
<b>MARKERS, PENS, PENCILS</b>	Ad Markers, Prismacolor Markers & Pencils, Tria Markers, Leads, Mechanical Pencils, Inks, Technical Pens	<b>124</b>
<b>CUTTING TOOLS</b>	X-Acto Knives & Blades, Paper Trimmers, Foam Cutters, Wide Format Cutters, Scissors, Cutting Mats	<b>139</b>
<b>DRAFTING, DRAWING, MEASUREMENT</b>	Loupes, Magnifiers, Rulers, T-Squares, Triangles, Curves, Templates, Wipes, Dust-Off	<b>148</b>
<b>FURNITURE</b>	Drafting Tables, Flat Files, Roll Files, Chairs, Lamps	<b>162</b>
<b>FINE ARTS</b>	Oil Paints, Watercolors, Designers' Gouache, Acrylics, Brushes, Canvas, Palettes, Dyes, Spray Paints, Pastels, Easels, Clay	<b>172</b>
<b>INDEX</b>		<b>194</b>

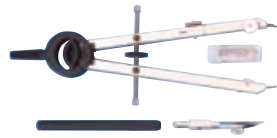
## COMPASSES



### Alvin Introductory 6" Bow Compass

6" pencil compass/divider with center screw adjustment. For circles from 1/8" to 9 1/2".

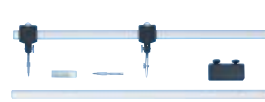
NO.	PRICE:
ALV203	\$20.95



### Alvin Basic-Bow Combination Compass

6" pencil compass/divider with center screw adjustment. Features split leg design for interchangeable pen, pencil, and divider points. For circles up to 10" diameter.

NO.	PRICE:
ALV505	\$29.50



### Alvin Speed-Set Beam Compass

Includes 13" beam bars with couplings to accommodate circles up to 48". Comes complete with interchangeable ruling pen, pencil and divider legs.

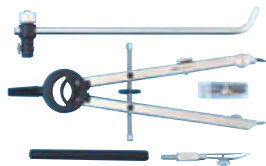
NO.	PRICE
ALV961B	\$45.50



### Alvin Clip Compass

Adjustable clip design accommodates markers, felt-tip pens, brushes, pencils, knives, scribes and other tools. Constructed of high-tech black plastic with metal support parts. For circles up to 9" in diameter.

NO.	PRICE
ALVCC545A	\$25.95



### Alvin Basic-Bow Combination Compass with Beam Bar

6" pencil compass/divider with center screw adjustment. Features split leg design for interchangeable pen, pencil, and divider points. This compass is equipped with a beam bar extension for circles up to 20" in diameter.

NO.	PRICE
ALV505V	\$37.50



### Universal Compass Adapter

Adapts any compass to any technical pen, lead holder, thin line mechanical pencil, ballpoint pen, felt-tip markers, cutting blade... even an individual stick of lead. Allows for change in height and tilt.

NO.	PRICE
UNIADP	\$11.95

### Replacement Compass Leads

Package of 3.

NO.	PRICE
ALVH3	\$2.79

## RULING PENS



**Alvin Ruling Pen**  
6", aluminum handle. Nickel-plated steel nib.

NO.	PRICE
ALV996	\$31.50



**Alvin Ruling Pen**  
5 1/2", octagon spring blade. Balanced club-style handle. Precision ground, tempered points of tool steel. Nickel finish with tapered black handle.

NO.	PRICE
ALV959	\$18.30

## DIVIDERS



### Alvin Academic Divider

6" friction divider with self-centering gear head design with replaceable needle points. Durable, matte nickel finish resists stains and tarnishing.

NO.	PRICE:
ALV660	\$11.95

### Divider Replacement Points

NO.	PRICE
ALVH4	\$2.79

## DRAWING INSTRUMENT SETS



### Alvin Instrument Set

6" and 4 1/2" combination bow beam compass with interchangeable pen, pencil, divider parts. 6 1/2" elbow beam bar extension and slide coupling for circles up to 20" diameter. 3 1/2" divider with adjustable needle points. 5 3/4" mechanical lead holder, lead pointer, metal tube of spare leads. Tube of spare parts and polishing cloth.

NO.	PRICE
ALV129B	\$67.95

## PORTABLE DRAWING BOARDS AND BOARD ACCESSORIES

*continued on p150*



### Alvin PXB Portable Parallel Straightedge Board

Finished in smooth, warp-free white melamine laminate; the perfect drawing surface, wherever you need it. Includes a brushed-aluminum mobile straightedge and plastic carrying handle. Straightedge hardware is spring-loaded to accommodate paper, vellum or cardboard.

NO.	SIZE	PRICE
ALVPXB21	16" x 21"	\$99.00
ALVPXB24	18" x 24"	105.00
ALVPXB26	20" x 26"	109.00
ALVPXB31	23" x 31"	130.00
ALVPXB36	24" x 36"	142.00
ALVPXB42	31" x 42"	174.00



### Mayline Portable Parallel Straightedge Board

Durable wood grain melamine finish. Transparent edged, black phenolic blade. Heavy gauge, black metal edges. Collapse-resistant tilting device; rubber bumpers for protection. Carrying handle.

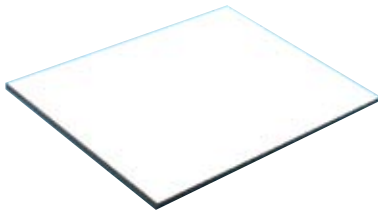
NO.	BOARD SIZE	PRICE
MAY8109C	18" x 24"	\$229.00
MAY8112C	21" x 26"	234.00
MAY8113C	24" x 30"	248.00
MAY8114C	24" x 36"	264.00
MAY8115C	31" x 42"	332.00

Prices are subject to change.

212.337.8600

**PORTABLE DRAWING BOARDS AND BOARD ACCESSORIES**

*continued from p149*



**Formica Drawing Boards**

White laminate board (both sides).

NO.	BOARD SIZE	PRICE
ALVXB117	23" x 31"	\$69.00
ALVXB118	24" x 36"	79.00
ALVXB130	30" x 42"	95.00
ALVXB148	36" x 48"	125.00
ALVXB160	37½" x 60"	195.00
ALVXB172	37½" x 72"	255.00



**Wood-Acrylic T-Squares**

Smooth finish maple is joined with recessed plastic transparent blades, ideal for inking.

NO.	SIZE	PRICE
CTHWH18	18"	\$16.60
CTHWH24	24"	19.30
CTHWH30	30"	22.60
CTHWH36	36"	29.70
CTHWH42	42"	42.30
CTHWH48	48"	50.30



**Steel T-Square**

A fine quality stainless steel T-square. Beveled blade is 1½" wide, 0.05" thick, with an aluminum head. No calibrations.

NO.	SIZE	PRICE
SSTQ18	18"	\$30.00
SSTQ24	24"	37.92
SSTQ30	30"	40.18
SSTQ36	36"	51.18
SSTQ42	42"	52.62
SSTQ48	48"	54.98



**Aluminum-Edged Drawing Boards**

Top quality wooden board with T-metal edges to prevent warping.

NO.	BOARD SIZE	PRICE
ALVDB111	12" x 17"	\$35.50
ALVDB114	18" x 24"	52.45
ALVDB116	20" x 26"	62.95
ALVDB117	23" x 31"	79.95
ALVDB118	24" x 36"	97.50
ALVDB142	31" x 42"	135.00



**AIF Stainless Steel Calibrated T-Square**

A "custom" T-square—designed by designers for designers. The stainless steel blade is beveled for inking, and calibrated with ¼<sup>64</sup>" and pica scales. Excellent feel and balance.

NO.	SIZE	PRICE
AIFTS18	18"	\$41.19
AIFTS24	24"	44.95
AIFTS30	30"	46.69
AIFTS36	36"	55.15
AIFTS42	42"	64.95



**Aluminum Calibrated T-Squares**

2" wide blade is constructed from instrument-grade aluminum attached to a durable plastic head. One edge is graduated with the 1<sup>st</sup> inch in 32<sup>nds</sup>, thereafter in 16<sup>ths</sup>. The other edge is graduated in centimeters.

NO.	SIZE	PRICE
CTHAP18	18"	\$29.95
CTHAP24	24"	33.40
CTHAP30	30"	39.50
CTHAP36	36"	46.00

**STRAIGHTEDGES**



**Stainless Steel Straightedges**

One squared edge and one beveled edge. 2" wide x 0.09" thick.

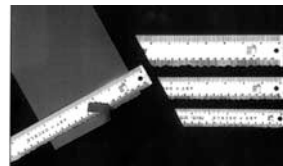
NO.	SIZE	PRICE
SSSE18	18"	\$48.80
SSSE24	24"	55.90
SSSE30	30"	66.40
SSSE36	36"	76.90
SSSE42	42"	85.00
SSSE48	48"	110.00



**Safety Edge**

A unique aluminum straightedge with a special guard rail that keeps fingers totally protected while you cut. A superb design.

NO.	SIZE	PRICE
DAHSE18	18"	\$54.95
DAHSE24	24"	64.95
DAHSE30	30"	74.95
DAHSE36	36"	89.95
DAHSE42	42"	99.95
DAHSE60	60"	199.95
DAHSE72	72"	229.95



**Deckle Edge Ruler**

Art Deckle is a hardened stainless steel ruler with a wavy edge that allows paper to be torn along the edge irregularly.

NO.	SIZE	PRICE
DAC12	12"	\$25.95
DAC18	18"	37.95
DAC48	48"	110.00



**Steel Edge AlumiCutter**

Use the AlumiCutter with a razor knife or rotary blade safely! Measure and then use the AlumiCutter as a cutting edge without changing tools. AlumiCutter's raised edge and finger groove protects fingers while cutting. Black only.

NO.	SIZE	PRICE
ALU1342	12"	\$13.25
ALU1343	18"	15.50
ALU1344	24"	17.75
ALU1345	30"	20.25
ALU1346	36"	22.50
ALU1348	48"	28.50

## PARALLEL RULING STRAIGHTEDGES



### Armoredge Mobile Parallel Straightedges

Bonded steel is applied to the clear plastic blade, providing a smooth cutting edge. Same action as the Mobile Parallel Straightedge.

NO.	SIZE	PRICE
MAYD7261ASE	36"	\$302.00
MAYD7262ASE	42"	314.00
MAYD7263ASE	48"	324.00
MAYD7265ASE	60"	381.00

### E-Z Grip Parallel Ruling Straightedges

Designed for an easy-to-grip finger lift and for raising or moving the straightedge. Complete with blade attachment and ball bearing pulleys.

NO.	SIZE	PRICE
MAY7250A	30"	\$177.00
MAY7251A	36"	188.00
MAY7252A	42"	199.00
MAY7253A	48"	210.00
MAY7255A	60"	277.00

### Mobile Parallel Ruling Straightedges

Action is free, smooth and effortless with Delrin rollers. Attached edges are clear. Parallel ruling action guided by cable mounted to board surface.

NO.	SIZE	PRICE
MAYD7260A	30"	\$183.00
MAYD7261A	36"	195.00
MAYD7262A	42"	206.00
MAYD7263A	48"	217.00
MAYD7265A	60"	262.00



### Mayline Straightedge Brake & Cable

For any above board parallel rule, this brake prevents loss of position with a twist knob action.

NO.	DESCRIPTION	PRICE
MAY7305	Brake	\$37.00
MAY7355	100' Cable	65.00



### Alvin Parallel Glider

This simple instrument combines the functions of T-square, triangle, transparent straightedge and protractor. No need for continual pickup and lay-down of instruments. Rolls easily to make parallel lines. 14" length.

NO.	PRICE
ALV296	\$19.95



### Rolling Ruler

A unique, compact tool. Use it to draw parallel lines, circles, arcs, angles, crosshatching, squares, quadrants and more—simply by inserting your pencil and rolling or swiveling in desired configurations. Circular readout scale shows measurement intervals. Clear, high-impact plastic construction.

NO.	PRICE
ROR12	\$10.95

## PAPER MEASUREMENT



### Gaebel #701 Paper Gauge

The choice of professionals, aluminum casing and stainless steel gearing combine for a durable yet accurate tool for measuring paper, plastic, steel or whatever flat surface you need. Each of the 100 graduations on this model are equal to .001". Each revolution of the pointer equals .100". (Inch increments)

NO.	RANGE	GRADUATIONS	PRICE
GAB701	.315"	.001"	\$189.95



### Gaebel #650 Electronic Paper Gauge

This electronic digital thickness gauge has a convenient "push-down" spindle with a throat capacity of .500". It has an on/off switch and uses a 1.5V battery. (Inch/Metric increments)

NO.	RANGE	GRADUATIONS	PRICE
GAB650	0"-.6"(15mm)	.0005"/.01mm	\$129.95



### Gaebel #7070 Paper Scale

This easy-to-read scale shows the different weights for book, bond, and cover stock. Hang a sheet of paper from the clip and the pointer indicates the weight of the paper. Comes with a carry pouch and instructions.

NO.	PRICE
GAB7070	\$17.95

## CURVE RULES



### Flexible Curve Rules

Lead core with outer casing of green square plastic; raised edge for inking. Base slightly concave to provide firm grip. Sliding lead core between steel ribbons controls curve when set.

NO.	SIZE	PRICE
CTHTC380	12"	\$9.25
CTHTC381	18"	10.25
CTHTC382	24"	11.95
CTHTC383	30"	13.95



### Acu-Arc Adjustable Curve Ruler

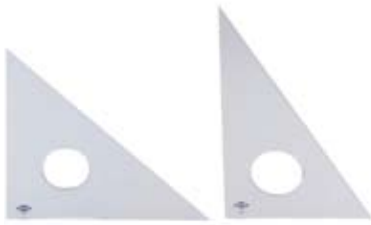
The 12" ruling edge easily adjusts for drawing curves and arcs of any radius from 6¾" to 200" and to infinity. Can also be used to determine radius of existing curves in dimensioning drawings and to find center lines and center points of curves.

NO.	PRICE
ALVA464	\$75.00

Prices are subject to change.

212.337.8600

**TRIANGLES**



**Professional Acrylic Triangles**

The professional series are crafted of smoked transparent sturdy acrylic that resists scratches and breakage. Features inking edge and a double bevel cut-out center to provide for easy pick-up. 30/60 degrees.

NO.	SIZE	PRICE
CTHP3906	6"	\$3.60
CTHP3908	8"	4.70
CTHP3910	10"	5.50
CTHP3912	12"	7.25
CTHP3914	14"	10.95
CTHP3916	16"	13.95
CTHP3918	18"	15.10

**Professional Acrylic Triangles**

Same as above, except 45/90 degrees.

NO.	SIZE	PRICE
CTHP4506	6"	\$4.45
CTHP4508	8"	6.10
CTHP4510	10"	8.30
CTHP4512	12"	11.75



**Fluorescent Triangles — 30/60 Degree**

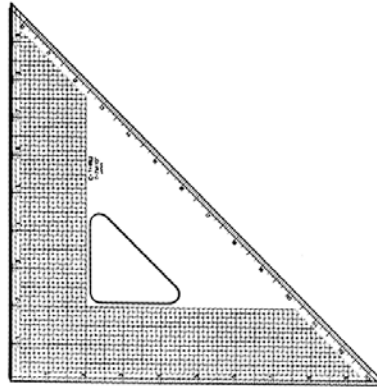
Flourescent Triangles are made of sturdy plastic and feature inking edges and a double bevel cut-out center to provide easy pick-up. 30/60 degrees.

NO.	SIZE	PRICE
CTHF3906	6"	\$3.95
CTHF3908	8"	5.95
CTHF3910	10"	6.95
CTHF3912	12"	8.95

**Fluorescent Triangles — 45/90 Degree**

Same as above, except 45/90 degrees.

NO.	SIZE	PRICE
CTHF4506	6"	\$5.50
CTHF4508	8"	7.75
CTHF4510	10"	9.95
CTHF4512	12"	13.95



**C-Thru Gridded Steel Edge Triangles**

An all-purpose clear acrylic triangle that incorporates a metal edge for cutting and inking; the remaining two edges are beveled and marked with 1" and 1/16" calibrations, and a graphic grid.

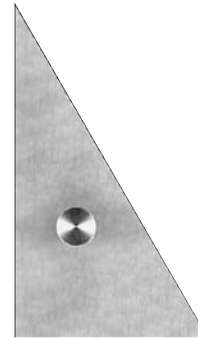
NO.	SIZE	ANGLE	PRICE
CTHT4M	10"	30/60/90	\$15.50
CTHT5M	12"	30/60/90	16.50
CTHT6M	8"	45/45/90	12.95
CTHT7M	10"	45/45/90	18.95



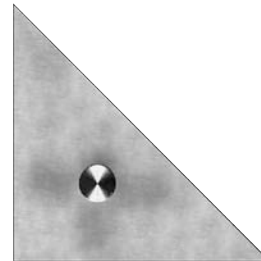
**Clear-Angle Adjustable Protractor Triangles**

Professional grade, .125 thickness acrylic plastic, with die-engraved black numerals and hairline graduations on the white vinyl protractor arc. Red engraved on magnifier directly over reading surface. Quick setting of any angle from 0 to 90 degrees; protractor arc graduated in 1/2 degree increments for fine adjustments. Aluminum, knurled setting knob for easy lifting. Beveled edges to permit close pencil tolerances.

NO.	SIZE	PRICE
ALV1606	6"	\$45.00
ALV1608	8"	49.00
ALV1610	10"	59.00
ALV1612	12"	69.00



Gaebel 30/60/90



Gaebel 45/45/90

**Gaebel Stainless Steel Triangles**

These quality triangles are made of heavy .080" thick stainless steel and have a reversible knob. Perfect for professionals using pen, pencil, knife or other instrument.

NO.	LENGTH	ANGLES	PRICE
GAB6828	8"	30/60/90	\$44.95
GAB68210	10"	30/60/90	47.95
GAB68212	12"	30/60/90	53.95
GAB68215	15"	30/60/90	72.95
GAB68218	18"	30/60/90	82.95
GAB6838	8"	45/45/90	62.95
GAB68310	10"	45/45/90	69.95
GAB68312	12"	45/45/90	74.95



Fairgate 30/60/90



Fairgate 45/45/90

**Fairgate Aluminum Triangles**

Lightweight, durable aluminum with matte-satin finish that resists stains and tarnishing. Features 1/8" graduations on the 90-degree angle. May also be used as a template for circles from 1/8" to 1 3/8".

NO.	SIZE	ANGLE	PRICE
FAR70108	8"	30/60/90	\$7.95
FAR70110	10"	30/60/90	11.40
FAR70112	12"	30/60/90	12.10
FAR71110	10"	45/45/90	12.10
FAR71112	12"	45/45/90	18.95

## CURVES



### Inker French Curve Set

Double-beveled inking edges and smoke topaz color. Set of 3.

NO.	PRICE
INKER355	\$14.95



### Aluminum Form Curve Rule

Made of  $\frac{1}{16}$ " thick hardened aluminum for use with both drafting instruments and cutting tools. Graduated in 8ths along the leading edge up to 24". Overall length: 23".

NO.	PRICE
ALVCV202	\$17.85



### Koh-I-Noor French Curves

Glass-clear plastic, 0.08" thickness. Square edges. Each curve packaged in a transparent envelope.

NO.	SIZE	PRICE
KOH8255A	5"	\$2.90
KOH8255B	8½"	4.60
KOH8255C	10½"	4.60
KOH8255D	7"	4.60
KOH8255E	8½"	5.40
KOH8255F	6½"	5.40
KOH8255G	8½"	5.40
KOH8255H	11"	6.00
KOH8255SET	Set of all 8 curves	37.00



### Transparent Ship Curves

Fabricated of clear plastic with precisely smoothed edges—absolute flatness. Sizes from 6¾" to 24". Set of 6.

NO.	PRICE
CTHSC66	\$19.95

## PROPORTIONAL SCALES



### C-Thru Proportional Scales

For the calculation of enlargements, reduction of photographs, artwork and layouts. Provides number of times reduction, percentage of enlargement or reduction. Two circular discs—one white laminated and the smaller buff-colored, laminated vinyl.

NO.	SIZE	PRICE
CTHPS69	5" Diameter	\$4.00
CTHPS79	6" Diameter	5.50
CTHPS80	10" Diameter	6.50

### C-Thru Metric Proportional Scale

15-centimeter diameter for the calculation of enlargements or reductions of photos, art work and layouts. Provides number of times of reduction as well as percentage of enlargement or reduction. Laminated vinyl.

NO.	PRICE
CTHPS89	\$5.50

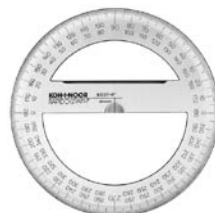
## TRANSPARENT PROTRACTORS



### Transparent Protractors

Glass-clear plastic with bevel and open center. Precision divided. Semi-circular (180 degrees).

NO.	SIZE	PRICE
KOH82224	4"	\$3.20
KOH82226	6"	5.50
KOH82228	8"	8.60



### Transparent Protractors

Same as the one described previously, except 360 degrees and circular.

NO.	SIZE	PRICE
KOH82204	4"	\$6.20
KOH82206	6"	9.80
KOH82208	8"	13.90

## TAPE RULES



### Architect's Pocket Scale

Designed for quick measurements on large blueprints and scale models. One edge of the 5-foot tape has a  $\frac{1}{4}$ "=1" scale; the other, a  $\frac{1}{8}$ "=1" scale. Blade retracts automatically.

NO.	PRICE
AIFW393	\$48.25



### Executive Thin Line Tape

Compact  $\frac{1}{4}$ " wide, yellow clad measuring tapes in polished chrome cases with spring action return. Graduations in consecutive inches to  $\frac{1}{16}$ " 6", first 12" to  $\frac{1}{32}$ ".

NO.	SIZE	PRICE
AIFW606	6' Length	\$27.95
AIFW608	8' Length	29.95

Prices are subject to change.

212.337.8600



## TRANSPARENT RULERS AND GAUGES



### C-Thru B-65 Transparent Ruler

Combined scales of inches in 10<sup>ths</sup> as well as millimeters.

NO.	SIZE	PRICE
CTHB65	1" × 12"	\$2.00



### C-Thru B-75 Transparent Ruler

Protractor ruler calibrated in combined scales of inches in 16<sup>ths</sup>, centimeters, architectural scale and inches in 10<sup>ths</sup>.

NO.	SIZE	PRICE
CTHB75	2" × 12"	\$2.65



### C-Thru B-85 Transparent Ruler

Graph ruler with inch calibrations in 16<sup>ths</sup>.

NO.	SIZE	PRICE
CTHB85	2" × 18"	\$3.95



### C-Thru B-90 Transparent Ruler

Pica ruler marked with agate line and inch graduations.

NO.	SIZE	PRICE
CTHB90	2" × 18"	\$3.95



### C-Thru B-95 Transparent Ruler

Metric, with one edge divided in 16<sup>ths</sup> and the other in millimeters. Each centimeter line is extended to the inch scale, for comparison between U.S.A. and metric scales.

NO.	SIZE	PRICE
CTHB95	2" × 18"	\$3.95



### C-Thru Graphic Arts Ruler

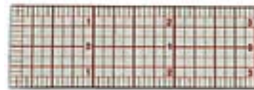
Inches, picas, agate calibrations and a variety of other data including proofreader's symbols, printer's rules (hairline to 12 pt.), ten percentage screens (10% to solid), halftone screens plus a simplified copy casting system. 12 pt. standard and 10 pt. elite typewriter copy counters, too. Laminated vinyl.

NO.	SIZE	PRICE
CTHGA86	2" × 18"	\$3.95

### C-Thru Graphic Arts Leading Gauge

Transparent plastic. Includes a leading gauge, pica scale, 1/16" scale, and point size gauge.

NO.	SIZE	PRICE
CTHGA96	13 3/4"	\$4.25



### C-Thru B-50 Ruler

Transparent, with graph lines. Calibrated in 16<sup>ths</sup> of an inch; includes a "0" centering scale. Beveled edge accommodates ink ruling.

NO.	SIZE	PRICE
CTHB50	1" × 6"	\$1.50



### Gaebel Graphic Arts Ruler

Transparent, with picas on one edge and agates on the other—plus a center scale showing points (0 to 144) and point sizes (6 pt. to 72 pt., as capital "E"s).

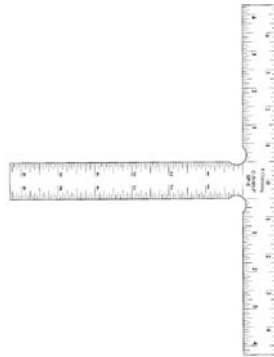
NO.	PRICE
GABP333	\$4.50



### Schaedler Precision Rules

Markings are indelibly printed (photographically) in black on a translucent, dimensionally stable .007 DuPont Cronar base. Precision accurate; measure through the ruler, not off it. Flexes for wrapping around 3-dimensional objects. Two 13 1/2" rules: One shows agate lines, picas, 1/2 to 30 pt. lines, and circles; the other indicates 12 in. marked down to 64<sup>ths</sup>, and centimeters from 0 to 30, marked down to millimeters. Dirt washes off easily. 2-rule set.

NO.	SIZE	PRICE
SCHRULE	12"	\$37.95
SCHRULE18	18"	39.95



### C-Thru Positioning Ruler

Features inch scale and "0" centering scale. Top of "T" is 9 1/2" long and the leg is 6 1/4" long.

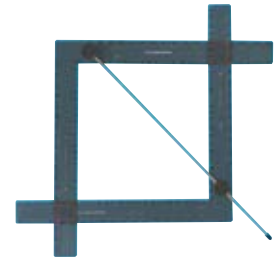
NO.	PRICE
CTHSP6	\$17.95



### C-Thru Corner Square

Clear with inside stainless steel edges, inch scales and "0" centering scales. One leg is 7 1/2" the other is 13 1/2".

NO.	PRICE
CTHB5M	\$11.95



### Scaleograph

An easy-to-use, time saving mechanical device that takes the guesswork out of scaling and cropping photographs, odd shapes, mortises, drawings, etc. Enlarges and reduces without computation. Scales in picas and inches.

NO.	PRICE
AIF5G	\$39.95



### Artograph Tracer

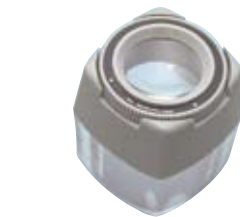
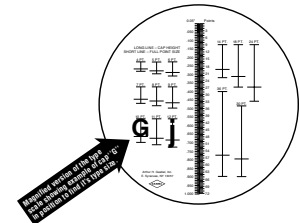
The low-cost solution for sizing and visualizing. No assembly, just place the projector on top of the design or pattern or photo. Push the on button and the image is instantly enlarged in full color.

NO.	PRICE
ARTTRACER	\$89.99

### Gaebel Half-Tone Screen Determiner

An ingenious device; each line in the grid is a wedge line. Placed on a half-tone, it forms a star that determines the screen count. No matching or rotating.

NO.	PRICE
GAB719	\$5.00



### Type Size Finder

8X achromatic magnifier with a scale to measure type sizes. Exact type size (upper & lower case) is shown instantly on the magnifier scale.

NO.	PRICE
AIFT5F	\$25.95

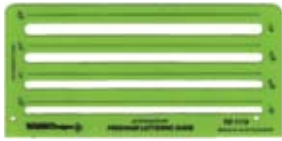
**LETTERING TEMPLATES**



**Vertical Lettering**

1/8", 1/16", 1/4" upper case (capitals) with equal spacing guide lines. Two edge strips for inking.

<b>NO.</b>	<b>PRICE</b>
BERR960	\$12.10



**Lettering Aid**

Contains slots for letter sizes: 1/8", 5/32", 3/16" and 1/4".

<b>NO.</b>	<b>PRICE</b>
ALVTD1119	\$8.60



**Ames Lettering Guide**

Measuring of guidelines made easy. Lines can vary in height from 1/16" to 1/2".

<b>NO.</b>	<b>PRICE</b>
AMESLG	\$3.95

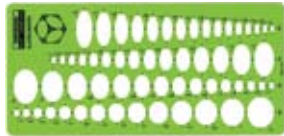


**Alphabet**

Contains upper case 1/2" block letters, numerals and symbols.

<b>NO.</b>	<b>PRICE</b>
ALV3011	\$10.95

**ELLIPSE TEMPLATES**



**Ellipse Master**

Ellipses from 1/4" to 1 1/8" in 25, 35, 45, and 60 degrees—a total of 60. Size: 10 7/16" x 5".

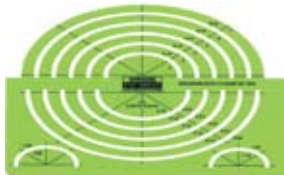
<b>NO.</b>	<b>PRICE</b>
BERR77	\$13.90



**Small Ellipses**

252 perfect cut-outs, plus pin-point centering for accurate positioning. 1/16" to 1/2" and 10 degrees to full circle. Size: 6 1/4" x 9 3/4".

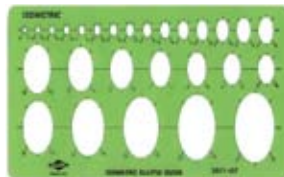
<b>NO.</b>	<b>PRICE</b>
TLYT991	\$6.25



**Large Isometric Ellipse**

Ellipses with isometric axes from 1 1/2" to 7" (25 ellipses).

<b>NO.</b>	<b>PRICE</b>
BERR124	\$19.30



**Ellipse Guide**

27 ellipses of 35 degrees, 16 from 1/8" to 2". Projects ellipses from 1/8" to 3/8" increasing by 32nds; then by 16ths to 1", then by 8ths to 2". Size: 6" x 10".

<b>NO.</b>	<b>PRICE</b>
ALVL391107	\$10.25

**Ellipse Guide**

12 ellipses of 35 degrees, 16 from 2 3/8" to 4". Projects ellipses from 2 3/8" to 3" increasing by 8ths; then by 4ths to 4". Size: 9 3/8" x 19 3/4".

<b>NO.</b>	<b>PRICE</b>
ALVL391102	\$19.50



**Small Series Standard Ellipse Templates**

Fifteen templates from 10 to 80 degrees in sizes of 1/8" through 2". Templates of 40, 45, 50, 55 and 60 degrees have ellipses from 1/8" to 3/8" increasing by 32nds then by 16ths to 1" then by 8ths to 2". Templates of 15, 20, 25, 30, and 35 degrees progress as those above, starting with sizes of 3/8, 1/4, 7/32, 1/16 and 1/32 inches, respectively.

NO.	DESCRIPTION	PRICE
ALVL390200	Set (10) Templates (15 thru 60 Degrees)	\$129.00
ALVL390202	Set (15) Templates (15 thru 80 Degrees)	169.00



**Large Series Standard Ellipse Templates**

Made to complement the small series in the same 10 through 80 degree range. These 15 templates have ellipses starting at 2 3/8" and increasing by 8ths to 3", then by 4ths to 4". Templates in all sets are marked with the long and short axis and size of each ellipse.

NO.	DESCRIPTION	PRICE
ALVL390302	Set (15) Templates (15 thru 80 Degrees)	\$235.00

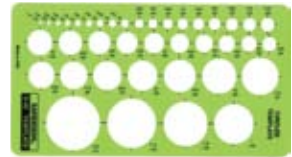


**Isometric Ellipses**

35 degree, 16 projection. 40 sizes from 3/32" to 1 1/16" (isometric dimensions). Pin hole centering on isometric axes. Size: 6 1/2" x 10 1/2".

<b>NO.</b>	<b>PRICE</b>
TLYT94	\$5.95

**CIRCLE TEMPLATES**



**Circles**

Circles from 1/16" to 1 3/8" diameter in increments. Size: 4" x 7 1/4".

<b>NO.</b>	<b>PRICE</b>
BERR40	\$8.70



**Large Circles**

45 circles, diameter size 1/16" to 2 1/4", in varying, increasing increments. Size: 7 3/4" x 8 3/4".

<b>NO.</b>	<b>PRICE</b>
BERR140	\$11.40



**Large Circles**

44 circles, 1/16" to 3" in diameter, with centering lines. Size: 7" x 9 1/4".

<b>NO.</b>	<b>PRICE</b>
ALVTD445	\$8.95

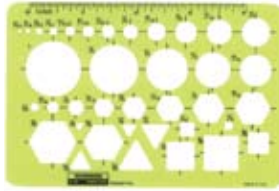


**Circles**

Pin hole centering for precision positioning. 3/64" diameter. Size: 4 3/4" x 8".

<b>NO.</b>	<b>PRICE</b>
TLYT85	\$2.95

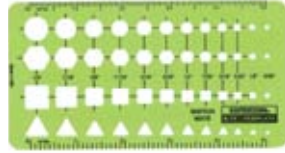
## CIRCLE, SQUARE, HEXAGON & DELTA TEMPLATES



### Pocket Pal

Symbols: Circles  $\frac{1}{32}$ " to 1", hexes  $\frac{1}{8}$ " to  $\frac{3}{4}$ "; squares  $\frac{1}{8}$ " to  $\frac{5}{8}$ "; deltas  $\frac{1}{8}$ " to  $\frac{5}{8}$ ". Inch scale on top edge. Size:  $5\frac{1}{8}$ "  $\times$   $3\frac{7}{16}$ ".

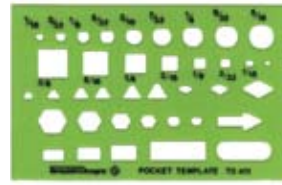
NO.	PRICE
BERR50	\$8.60



### Sketch Mate

Circles, hexagons, squares, triangles from  $\frac{3}{64}$ "; to  $\frac{1}{2}$ ". Two 5" scales in 10<sup>ths</sup> and 16<sup>ths</sup>. Size:  $5\frac{3}{4}$ "  $\times$   $3\frac{3}{4}$ ".

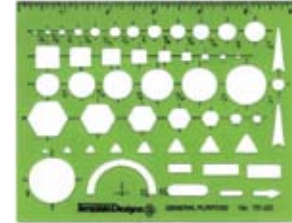
NO.	PRICE
BERR19	\$11.00



### Pocket Size

Small circles, squares, deltas, rectangles and hexes. Size:  $3\frac{7}{8}$ "  $\times$   $2\frac{1}{2}$ ".

NO.	PRICE
ALVTD411	\$5.95



### General Purpose

53 useful openings. Green, transparent plastic. Size:  $4\frac{1}{2}$ "  $\times$  6".

NO.	PRICE
ALVTD422	\$6.75

## ARROW & BRACKET TEMPLATES



### Arrows & Brackets Pointer

For drawing details, sections, motion or flow. Bracket cut-outs in 2 styles (10 sizes) based on typewriter spacing. Scalloped and wavy lines with edges. Mapping symbols. Size:  $6\frac{3}{4}$ "  $\times$  10".

NO.	PRICE
TLYT66	\$5.95



### Arrows

Nine sizes of 6 differently shaped arrows. Size:  $3\frac{1}{2}$ "  $\times$  4".

NO.	PRICE
ALVTD302	\$6.25

## VINYL LETTERS & NUMERALS

**A B C D E F G H I**  
**J K L M N O P Q**  
**R S T U V W X Y**  
**Z a b c d e f g h i j**  
**k l m n o p q r s t**  
**u v w x y z 1 2 3**  
**4 5 6 7 8 9 0 & ?**  
**! £ \$ % & ( ) / = & ?**

### Chartpak Vinyl Sign Letters & Numerals

A comprehensive range of die-cut, professional quality self-stick lettering in the Helvetica Medium typeface. Size range from  $\frac{1}{4}$ " to 6" (cap height); letters, numerals, punctuation and other characters.

Colors: Black (BK), White (WT), Red (RD), Blue (BE), Silver (SR) and Gold (GD). Specify letters (VL) or numerals (VN).

NO.	SIZE	NUMERALS		LETTERS	
		PRICE		PRICE	
CHP	$\frac{1}{4}$ "	\$2.95		\$3.80	
CHP	$\frac{1}{2}$ "	2.95		3.80	
CHP	$\frac{3}{4}$ "	2.85		3.80	
CHP	1"	2.95		5.50	
CHP	2"	2.95		10.30	
CHP	3"	4.20		12.90	
CHP	4"	8.75		17.40	
CHP	6"	12.05		23.90	

## DUST-OFF AIR SPRAY CLEANER

A precise, effective tool for removing dust and dirt from delicate equipment, surfaces, and photos without scratching or smudging. Blows dirt away with bursts of air; trigger control allows the user to vary the pressure from a slight puff to a strong blast. Slender valve/nozzle aims the air flow with nearly pinpoint accuracy. 100% ozone safe.



### Falcon Dust Off Plus

Vector valve allows can to remain upright while the nozzle moves up and down 180 degrees and sweeps in full 360-degree circles.

NO.	DESCRIPTION	PRICE
FALDPSA	Kit Complete	\$49.50
FALDPSRA	10 oz. Refill	12.99



### Falcon Dust Off Disposable

Extra large 10 oz. disposable duster. Two extension tubes included, one for maximum blasting, one for more delicate dusting.

NO.	DESCRIPTION	PRICE
FALDPXLA	10 oz.	\$11.99
FALDPSJCA	Junior 3.5 oz.	8.95

**STUDIO ACCESSORIES**



**Roto-Tray II**

This 10" revolving tray holds brushes, pencils, drawing instruments, pens, knives, and a caddy for markers. Constructed of high impact, heavy-duty plastic with sturdy metal base. Felt feet prevent marring of furniture.

NO.	COLOR	PRICE
ROTOBK	Ebony Black	\$17.95
ROTOWE	Titan White	17.95
ROTORD	Fire Red	17.95



**Dusting Brush**

Pure gray horsehair 8" brush part; 2¼" trim. Lacquered, fancy handle. Overall: 13".

NO.	PRICE
ALV2341	\$5.25



**Du-All Dusting Brush**

Gray horsehair and fiber mixture, 8½" brush part; 2" trim. Natural lacquered handle. Overall: 14¾".

NO.	PRICE
CTHDB2	\$5.50



**Webril Wipes**

A non-woven pure cotton fabric for applying developers, cleaning, etc. Super-absorbent.

NO.	DESCRIPTION/SIZE	PRICE
WEBW	Pkg. (100) Wipes, 4" x 4"	\$11.95
WEBR	Roll (100) Wipes, 8" x 8"	18.95
WEBD	Roll Dispenser	12.99

**Webril Pre-Moistened Hand Cleaning Wipes**

Imbedded with an efficient fast drying solution, Webril hand cleaning wipes will remove oil, grease and dirt stains from your hands leaving them clean, dry and lemon fresh.

NO.	DESCRIPTION	PRICE
WEB569754	Pkg. (70) Wipes, 10" x 11.8"	\$19.95

**Webril Shop Cloths**

Non-woven cloth is soft, absorbent, and extremely durable. Combines the characteristics of cloth towels with ease of disposable wipes.

NO.	DESCRIPTION	PRICE
WEB561539	Pkg. (150) Wipes, 12" x 17"	\$44.95

**Kim Wipes**

Lint-free wipes in dispenser box.

NO.	SIZE	PRICE
KIM34155	5" x 8½"	\$7.95
KIM34256	15" x 17"	14.95



**Scotch-Brite High Performance Cleaning Cloths**

Unique micro-texture fibers lift and trap dust, grease, oils and fingerprints without the use of special cleaners or polishes. Machine washable, safe for monitors, computers, CDs, eyewear and other delicate surfaces. 12½" x 14¾" (3/pkg)

NO.	PRICE
MMM2011-3	\$27.95

**Photowipes**

Extra absorbent, disposable tissues. Sheet size: 13½" x 17½". 75 in a dispenser box.

NO.	PRICE
STP	\$11.95

**Anti-Static Cloth**

Negatives, slides, carriers, condensers—anything that collects dust can be cleaned with this 10" x 10" specially treated cloth.

NO.	PRICE
BES8956	\$14.95

**Phototex Scanner Wipes**

A disposable nonwoven wipe formulated for use on color scanners; designed to encapsulate dust without leaving a residue. Leaves surface static-free. Excellent pick-up capacity. 100 wipes per pkg. 4 pkgs per case.

NO.	PRICE/PKG.
AIFPSW	\$39.95



**Sprayway Graphic Art Glass Cleaner**

Cleans glass quickly without streaking.

NO.	PRICE
SPY040	\$7.95

**Disposable Latex Gloves**

Protects hands when using developers, chemical solutions, etc. Long lasting. One size (large) will fit everyone. Translucent white. Dispenser box of 100.

NO.	PRICE
AIFVG	\$19.95

**Lint-Free Gloves**

White cotton lintless gloves. 1 dozen.

NO.	PRICE
AIFCTG	\$9.95

**Cotton Swabs**

Package of 100 double-tipped 6" Sticks.

NO.	PRICE
COTSWABS	\$3.95

## MAGNIFYING & REDUCING GLASSES



### General Purpose Magnifiers

High power optical quality magnifiers. Lightweight, easy-grip molded one-piece frame. Scratch resistant and unbreakable. Bifocal lens for stronger magnification and greater detail.

NO.	DIAM	POWER	PRICE
ALVSV2P	2"	3X	\$7.95
ALVSV3P	3"	2.5X w/6X Bifocal	9.95
ALVSV4P	4"	2X w/6X Bifocal	16.95
ALVSV5P	5"	2.5X w/6X Bifocal	23.95



### Selsi Hand Magnifier

4.5X magnifying lens is mounted in a polished chromium-plated brass frame and neckpiece. Black, ribbed plastic handle. 7/12" diameter.

NO.	PRICE
SEL311	\$18.95



### Selsi Reading Glass

Oblong rectangular lens, approximately 4.5 diopters, in one-piece molded black plastic frame with offset handle. Lens size: 2" x 4".

NO.	PRICE
SEL302	\$12.95



### Selsi Reducing Glass

For viewing images in reduced dimensions. Double concave lens is optically ground and polished. Set in chromium-plated brass frame and neckpiece, with ribbed black plastic handle. Lens diameter: 3".

NO.	PRICE
SEL370	\$17.95



### UltraOptix UltraDome Self Focus Magnifier

This solid acrylic dome magnifier offers optical clarity by gathering light. UltraDome can be used in viewing maps, charts, fine print, stamps, coins, photographs, and even X-rays.

NO.	DESCRIPTION	PRICE
ALVULD1	2" Self-Focus Magnifier, 4X	\$16.50
ALVULD2	2.5" Self-Focus Magnifier 4X	29.95



### UltraOptix Lighted 5" Magnifier

Jumbo 5" lighted magnifier is as big as they come. Full view 2.5X lens with 6X bifocal insert. Requires two AA batteries (not included).

NO.	PRICE
ALV5SLBX	\$22.95



### Clip-On Spectacle Magnifiers

Get precisely the magnification you need with this unique box set of four lenses (1.7, 2.0, 2.5, and 3.0X magnification). Clip the lightweight frame to your glasses, select the lens and see the detail. Just flip up the lens for normal viewing.

NO.	PRICE
DAYU91171	\$16.99



### Flexilens Magnifier

This versatile magnifier has a 3.5" diameter lens with a 2.25X magnification and a 1/2" inset lens with a 4.0X magnification. 7" flexible arm.

NO.	PRICE
DAYU91091	\$24.99



### UltraOptix Hard Page Lens

Full page (8.5" x 11") magnifier. Unbreakable and scratch resistant. Optical grade lens packed in individual sleeve.

NO.	PRICE
ALVHLP	\$9.25

## LINEN TESTERS & LOUPES



### Agfa 8X Magnifier Loupe

For studying negatives, photos, prints, stamps, etc. Virtually distortion free. Clear plastic base holds magnifier in focus.

NO.	PRICE
AGF9726	\$11.95



### Peak 10X Light Loupe

Built-in lighting device uses 2 "C" batteries (not included). The crystal clear lens is shielded by a hard plastic holder. Barrel is metal.

NO.	PRICE
PEAK1966	\$56.95



### Peak 30X Loupe

Small and lightweight. Can be easily managed with one hand while the other hand holds the object to be examined.

NO.	PRICE
PEAK1996	\$96.50



### Peak 4X Scale Loupe

Semi-transparent and black bottom skirts allow one-touch changing operation depending upon lighting conditions. The semi-transparent photographic films while the black skirt can be used for checking the focus of large-format cameras. A multi-groove screw helicoid system is used for focus adjustment ensuring smooth operation. Neck strap included.

NO.	PRICE
PEAK2038	\$144.95



### Peak 5X Loupe

A practical 5X magnifier with a clear acrylic tube.

NO.	PRICE
PEAK1960	\$26.95



### Peak 10X Loupe

A moderately priced, all-purpose magnifier with large magnification and wide visual field.

NO.	PRICE
PEAK1961	\$52.95



### Peak 7X Scale Loupe

Unique design incorporates a precision scale in its achromatic optics. The focusing lens consists of three elements in two groups. The objective lens and eyepiece both measure approximately 3/4" in diameter. The internal scale is just over 1" in diameter. Overall diameter is 1.4" and height is 2.5".

NO.	PRICE
PEAK1975	\$96.50



### Peak 7X Mini Comparater

Handy and accurate optical measuring instrument with photograted scale. Multiple-thread provides for very smooth focusing.

NO.	PRICE
PEAK2015	\$87.95



### Peak 10X Loupe

A moderately priced, all-purpose magnifier composed of two plastic lenses. Large magnification and wide visual field, clear base.

NO.	PRICE
PEAK2032	\$25.95



### Peak 15X Loupe

Has a coated, achromatic lens design using three glass elements in two groups. Clear plastic base allows for illumination of opaque objects.

NO.	PRICE
PEAK1962	\$57.95



### Peak 10X Scale Loupe

Precision achromatic lenses with four coated elements in two groups, photo-printed scale and focusing ring. The contradiction between high resolving power and wide visual field has been eliminated so it can provide efficient inspection. Includes carrying case.

NO.	PRICE
PEAK1983	\$141.95

### Peak 8-16X Loupe

Designed to permit the stepless change of magnification for zooming operation for 8X to 16X.

NO.	PRICE
PEAK2044	\$469.00

### Large Desk Loupe

Big, bright 2 1/4" x 2 1/4" viewing area with 4X magnification. Distortion-free lens. Side openings in the transparent base permit the use of pincers within the magnified area.

NO.	PRICE
AIF5444	\$29.95



### Peak 10X Steinhill Loupe

Color corrected 3-element composite lens. High resolution throughout the wide field of view.

NO.	PRICE
PEAK198510	\$114.95



### Peak 22X Loupe

High-grade, powerful magnifier with a coated, achromatic lens composed of four elements in three groups with a clear base.

NO.	PRICE
PEAK1964	\$91.50



### Peak Head Loupe

An extremely lightweight binocular head loupe with two varying magnifications in one device. Comes with adjustable headband and another pair of lenses to provide a magnifying power of 3.3X. Magnification: 2.2X and 3.3X.

NO.	PRICE
PEAK2035	\$75.95

## LINEN TESTERS & LOUPES



Schneider 3X (SCH7X7)



Schneider 4X (SCH4X)

### Schneider 3X and 4X Loupes

The 3X loupe has a large 7 × 7 cm viewing field and offers edge-to-edge sharpness with absolutely no distortion. Ideal for checking large format films. The 4X loupe is a universal magnifier of high resolution, also with a distortion-free viewing field, which eliminates eyestrain. Both loupes have interchangeable base for viewing proof sheets and photographs.

NO.	MAGNIFICATION	PRICE
SCH7X7	3X	\$320.00
SCH4X	4X	256.00



Schneider 6X (SCH6X)



Schneider 10X (SCH10X)

### Schneider 6X, 8X and 10X Loupes

The 6X loupe has more image fidelity for precise evaluation of 35 mm slides and negatives at a bigger magnification. The 6X has an interchangeable base for viewing proof sheets and photographs. The 10X is specifically designed for small formats and the finest of details. Designed for transparent work only.

NO.	MAGNIFICATION	PRICE
SCH6X	6X	\$464.00
SCH8x	8X	332.00
SCH10x	10X	400.00



### Peak 15X Scale Loupe

Comes with 4 different graduated scale lenses.

NO.	PRICE
PEAK2016	\$179.95



### 12X Engraver's Loupe

A top-quality loupe for any application requiring extreme distortion-free magnification. The coated achromatic lens is swivel mounted. Case is included.

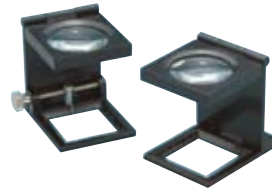
NO.	PRICE
SEL378	\$69.95



### Peak Professional Anastigmatic Loupe

Lets you view the entire image area of a film or negative, as large as 32mm × 45mm, or flat objects less than 58mm in diameter. Insures critical sharpness from edge to edge due to the high degree of optical correction for astigmatism, curvature of field, and optical aberrations. Ordinary magnifiers are corrected only for the center image. Designed to be viewed 1 inch above the eye piece. Part of barrel is constructed of clear plastic for illumination. A smooth focusing device allows for correction to the vision of the individual. A detachable glass scale is included to allow for measurement of objects directly on the film plane.

NO.	MAGNIFICATION	PRICE
PEAK1990	4X	\$289.95
PEAK1990-7	7X	289.95



### Folding Linen Tester

Black folding linen tester with graduated 1" × 1" opening. Complete with case. Power 5X.

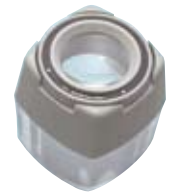
NO.	PRICE
AIFLT387	\$16.75



### Samigon 2 × 2 Slide Viewer

Hand held, direct eye viewing in ordinary light. Holds cardboard or unmounted glass slides. 1" mini screen. Overall size: 1¼" × 2¼".

NO.	PRICE
SAM2X2	\$13.95



### Type Size Finder

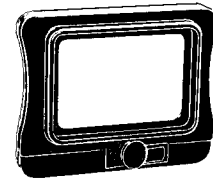
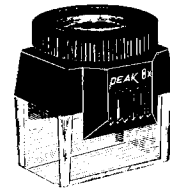
8X achromatic magnifier with a scale to measure type sizes. Exact type size (upper & lower case) is shown instantly on the magnifier scale.

NO.	PRICE
AIFTSF	\$25.95

### Gaebel 10X Tripod Magnifier

Two optically ground and polished lenses fitting into a black plastic threaded lens mount, screwing into metal tripod stand. Black finish.

NO.	FIELD OF VIEW	POWER	PRICE
GAB724	.7" (18mm)	10X	\$15.95



### Peak 8X Loupe for 35mm Format

Covers 35mm picture area for checking negatives, proofs & slides. Three-element achromatic lens in screw-in eye piece for increased magnification. Molded rectangular body with clear base that includes 1mm scale on bottom. Optional 35mm strip holder snaps onto bottom of loupe & holds the film strip and has a punch for notching negatives and transparencies. Optional light box provides easy viewing of transparencies.

NO.	DESCRIPTION	PRICE
PEAK2018WS	Loupe	\$76.95
PEAK2018PH	35mm Strip Holder	32.95



### Gaebel Deluxe Stand Microscopes

The top of the line in terms of compact microscopes, this precision instrument features fully-coated optics, durable anodized aluminum body and a clear acrylic base. It rests directly on the material. The 25X reticle ranges from 0 to .12" in .002" increments. The 50X ranges from 0 to .06" in .001" increments.

NO.	F. OF VIEW	POWER	PRICE
GAB426925	.13" (3.3mm)	25X	\$169.95
GAB426950	.08" (2mm)	50X	179.95

### Gaebel Pocket Sliding Magnifier

Convenience is the main feature of this economical, but very useful 3X magnifier. The magnifier slides into its own case for protection. It can be carried in a pocket or purse as you would carry change.

NO.	POWER	PRICE
GAB7506	3X	\$10.95

Prices are subject to change.

212.337.8600