



|   |  |            |
|---|--|------------|
| <b>PRESENTATION</b>                         | Portfolios, Presentation Cases, Binders, Storage, Sheet Protectors, Job Jackets  | <b>3</b>   |
| <b>BINDING SYSTEMS</b>                      | Unibind Thermal Binding, Plastic Coil, Wire Binding, Covers  | <b>29</b>  |
| <b>DISPLAY</b>                              | Banner Stands, Display Easels, Exhibits, Backlight Panels, Sign Holders  | <b>34</b>  |
| <b>FRAMING</b>                              | Metal Frames, Wood Frames, Easel Backs, Pre-Cut Mats, Hangers  | <b>41</b>  |
| <b>COMPUTER GRAPHICS</b>                    | Apple Computer, Wide Format, RIPs, Epson, Hewlett-Packard, Xerox, Latran, Magic, Azon, Laser & Inkjet Supplies, Color Copier & Laser Paper | <b>54</b>  |
| <b>COLOR REFERENCE</b>                      | Pantone, Light Boxes, Color Corrected Viewers, Trumatch, Toyo, Xrite   | <b>84</b>  |
| <b>PAPER, BOARDS, ACETATE</b>               | Pads, Mounting Boards, Mat Boards, Foam Boards, Color Papers, Films, Drawing Paper   | <b>94</b>  |
| <b>TAPES, ADHESIVES, PACKAGING SUPPLIES</b> | Xyron, Seal, Dry Mount, Laminating, Spray Adhesives, Spray Booths, Glues, Hook & Loop  | <b>111</b> |
| <b>MARKERS, PENS, PENCILS</b>               | AD Markers, Prismacolor Markers & Pencils, Tria Markers, Leads, Mechanical Pencils, Inks, Technical Pens                                   | <b>124</b> |
| <b>CUTTING TOOLS</b>                        | X-Acto Knives & Blades, Paper Trimmers, Foam Cutters, Wide Format Cutters, Scissors, Cutting Mats  | <b>139</b> |
| <b>DRAFTING, DRAWING, MEASUREMENT</b>       | Loupes, Magnifiers, Rulers, T-Squares, Triangles, Curves, Templates, Wipes, Dust-Off   | <b>148</b> |
| <b>FURNITURE</b>                            | Drafting Tables, Flat Files, Roll Files, Chairs, Lamps   | <b>162</b> |
| <b>FINE ARTS</b>                            | Oil Paints, Watercolors, Designers Gouache, Acrylics, Brushes, Canvas, Palettes, Dyes, Spray Paints, Pastels, Easels, Clay                 | <b>172</b> |
| <b>INDEX</b>                                |  | <b>194</b> |

## TRACING, LAYOUT & VISUALIZING PAPERS



### Swiss Lightweight Tracing Paper

A general purpose paper with a fine uniform tooth. Smooth and very transparent; perfect for "first" roughs and multiple sketches. Individually shrink film wrapped. 12 pads per carton. Rolls are 20 yds. Reams are 500 sheets.

| NO.       | SIZE          | PRICE/PAD  |
|-----------|---------------|------------|
| SWISS12   | 9" x 12"      | \$9.75     |
| SWISS14   | 11" x 14"     | 15.49      |
| SWISS17   | 14" x 17"     | 21.95      |
| SWISS24   | 19" x 24"     | 35.49      |
| SWISS38   | 24" x 38"     | 64.38      |
| NO.       | SIZE          | PRICE/ROLL |
| SWISS362  | 36" x 20 yds. | \$15.32    |
| SWISS422  | 42" x 20 yds. | 18.33      |
| NO.       | SIZE          | PRICE/REAM |
| SWISS11RM | 8½" x 11"     | \$32.99    |
| SWISS12RM | 9" x 12"      | 39.95      |
| SWISS14RM | 11" x 14"     | 54.30      |
| SWISS17RM | 14" x 17"     | 83.50      |
| SWISS24RM | 19" x 24"     | 162.95     |

### Medium Weight Tracing Paper

Finely grained; a general utility paper. 6 pads per package.

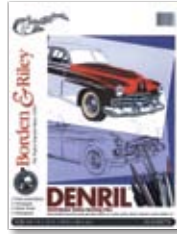
| NO.       | SIZE          | PRICE/PAD  |
|-----------|---------------|------------|
| AIF31412  | 9" x 12"      | \$9.94     |
| AIF31414  | 11" x 14"     | 13.28      |
| AIF31417  | 14" x 17"     | 19.94      |
| AIF31424  | 19" x 24"     | 33.24      |
| AIF31438  | 24" x 38"     | 57.21      |
| NO.       | SIZE          | PRICE/ROLL |
| AIF314362 | 36" x 20 yds. | \$23.87    |
| AIF314422 | 42" x 20 yds. | 27.78      |



### Graphics Marker 360 Layout Paper

A white, translucent sheet, specially made to accept felt nib markers. Holds sharp edges, with excellent color saturation. Marker colors flow on smoothly without streaking or spreading; no bleed-through to sheet underneath. 12 pads per carton.

| NO.      | SIZE      | PRICE/PAD |
|----------|-----------|-----------|
| BFG36012 | 9" x 12"  | \$12.95   |
| BFG36014 | 11" x 14" | 17.49     |
| BFG36017 | 14" x 17" | 24.95     |
| BFG36024 | 19" x 24" | 47.95     |



### Denril Multi-Purpose Drafting Paper

Combines the best properties of paper and film; ultra-smooth, matte finish on both sides. Receptive to all drawing mediums and markers—erases easily, even with inks. Translucent for tracing and overlays; will not discolor or become brittle. 25 sheets to a pad.

| NO.    | SIZE      | PRICE/PAD |
|--------|-----------|-----------|
| AIFD12 | 9" x 12"  | \$16.10   |
| AIFD14 | 11" x 14" | 22.88     |
| AIFD17 | 14" x 17" | 31.77     |
| AIFD24 | 19" x 24" | 60.83     |



### English Vellum Paper

An imported, top quality white stock; strong, smooth and super translucent. Very clear; free from oil or odor. Takes pen and ink washes, and most media. 12 pads per package.

| NO.      | SIZE          | PRICE/PAD  |
|----------|---------------|------------|
| AIFEV12  | 9" x 12"      | \$14.98    |
| AIFEV14  | 11" x 14"     | 20.43      |
| AIFEV17  | 14" x 17"     | 30.21      |
| AIFEV24  | 19" x 24"     | 56.00      |
| NO.      | SIZE          | PRICE/ROLL |
| AIFEV362 | 36" x 20 yds. | \$59.61    |
| AIFEV422 | 42" x 20 yds. | 69.38      |



### Vidalon Vellum Paper

Clear, supertranslucent and slightly grained. Made by the famed Canson & Montgolfier mills. 50 sheets per pad. 90 lb.

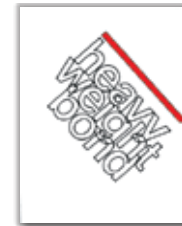
| NO.     | SIZE      | PRICE/PAD |
|---------|-----------|-----------|
| CAN9012 | 9" x 12"  | \$20.90   |
| CAN9014 | 11" x 14" | 26.65     |
| CAN9017 | 14" x 17" | 41.80     |
| CAN9024 | 19" x 24" | 71.90     |



### Letraset Bleedproof Marker Paper

Offering excellent bright white paper that will not allow your colors to bleed or feather, the surface of this paper is perfect for color markers and most studio media, and is ideal for roughs and visuals. There are 50 sheets per pad.

| NO.       | SIZE      | PRICE  |
|-----------|-----------|--------|
| LETMP812  | 8" x 12"  | \$9.99 |
| LETMP1216 | 12" x 16" | 16.99  |
| LETMP1623 | 16" x 23" | 34.50  |



### Heavyweight White Bond Paper

An opaque, heavy (32 lb.) ledger bond paper. Finely grained, takes pencil, ink or watercolor. 6 pads per package.

| NO.      | SIZE      | PRICE/PAD |
|----------|-----------|-----------|
| AIF32H12 | 9" x 12"  | \$11.95   |
| AIF32H14 | 11" x 14" | 15.95     |
| AIF32H17 | 14" x 17" | 21.95     |
| AIF32H24 | 19" x 24" | 36.95     |
| AIF32H38 | 24" x 38" | 76.95     |



### Lightweight White Bond Paper

Semitransparent; a 16 lb. weight favored for layouts, sketches and comprehensives. 6 pads per package.

| NO.      | SIZE      | PRICE/PAD |
|----------|-----------|-----------|
| AIF16H12 | 9" x 12"  | \$9.25    |
| AIF16H14 | 11" x 14" | 11.99     |
| AIF16H17 | 14" x 17" | 17.95     |
| AIF16H24 | 19" x 24" | 30.95     |
| AIF16H38 | 24" x 38" | 64.95     |

### Signwriter's Bond Paper

A 20 lb. opaque white bond paper, in large rolls. Fine grained surface takes marker, pencil, ink or tempera. Useful for signs and exhibits.

| NO.        | ROLL SIZE     | PRICE/ROLL |
|------------|---------------|------------|
| AIF1200245 | 24" x 25 yds. | \$29.95    |
| AIF1200365 | 36" x 25 yds. | 34.95      |
| AIF1200425 | 42" x 25 yds. | 37.95      |

Prices are subject to change.

212.337.8600

## TECHNICAL PAPERS



### Clearprint 1000-H Technical Tracing Vellum

100% white cotton base; withstands erasures without damage to surface. Pen and ink produces clean lines—no skipping or feathering. Will not expand or contract in changing atmospheric conditions. Sufficient strength for both original drawings and tracings. 16 lb. Thickness: 0.0028".

| NO.   | PAD SIZE  | PRICE   |
|-------|-----------|---------|
| CLR11 | 8½" × 11" | \$14.95 |
| CLR17 | 11" × 17" | 29.30   |
| CLR22 | 17" × 22" | 55.10   |
| CLR24 | 18" × 24" | 60.56   |

| NO.       | PKG. (100 SHTS) | PRICE   |
|-----------|-----------------|---------|
| CLR11-100 | 8½" × 11"       | \$27.30 |
| CLR17-100 | 11" × 17"       | 52.49   |
| CLR22-100 | 17" × 22"       | 97.35   |
| CLR24-100 | 18" × 24"       | 105.39  |
| CLR36-100 | 24" × 36"       | 201.31  |

| NO.    | ROLL SIZE     | PRICE   |
|--------|---------------|---------|
| CLR122 | 12" × 20 yds. | \$21.89 |
| CLR125 | 12" × 50 yds. | 50.88   |
| CLR182 | 18" × 20 yds. | 33.22   |
| CLR185 | 18" × 50 yds. | 65.87   |
| CLR242 | 24" × 20 yds. | 42.18   |
| CLR245 | 24" × 50 yds. | 101.30  |
| CLR302 | 30" × 20 yds. | 48.82   |
| CLR305 | 30" × 50 yds. | 113.45  |
| CLR362 | 36" × 20 yds. | 55.98   |
| CLR365 | 36" × 50 yds. | 122.55  |
| CLR422 | 42" × 20 yds. | 67.89   |
| CLR425 | 42" × 50 yds. | 152.39  |

### Clearprint 1000-HPG Technical Gridded Tracing Vellum

Same as the 1000-H paper, except this paper is gridded. Grid is a fade-out blue grid, available in a 4, 8 or 10 squares per inch format.

| NO.      | PAD SIZE  | PRICE   |
|----------|-----------|---------|
| CLR11-4  | 8½" × 11" | \$19.26 |
| CLR17-4  | 11" × 17" | 35.56   |
| CLR22-4  | 17" × 22" | 74.69   |
| CLR11-8  | 8½" × 11" | 19.26   |
| CLR17-8  | 11" × 17" | 36.56   |
| CLR22-8  | 17" × 22" | 74.69   |
| CLR11-10 | 8½" × 11" | 19.26   |
| CLR17-10 | 11" × 17" | 36.56   |
| CLR22-10 | 17" × 22" | 74.69   |

| NO.       | ROLL SIZE     | PRICE   |
|-----------|---------------|---------|
| CLR362-4  | 36" × 20 yds. | \$77.04 |
| CLR362-8  | 36" × 20 yds. | 77.04   |
| CLR362-10 | 36" × 20 yds. | 77.04   |

### Clearprint 1020 Technical Tracing Vellum

1020 is a heavier 20 lb. vellum with all the qualities of the standard 1000-H.

| NO.          | PKG. (100 SHTS) | PRICE   |
|--------------|-----------------|---------|
| CLR102011100 | 8½" × 11"       | \$32.55 |
| CLR102012100 | 9" × 12"        | 36.30   |
| CLR102017100 | 11" × 17"       | 63.29   |
| CLR102018100 | 12" × 18"       | 66.54   |
| CLR102022100 | 17" × 22"       | 119.27  |
| CLR102024100 | 18" × 24"       | 129.72  |

| NO.        | ROLL SIZE     | PRICE   |
|------------|---------------|---------|
| CLR1020242 | 24" × 20 yds. | \$57.47 |
| CLR1020245 | 24" × 50 yds. | 131.58  |
| CLR1020302 | 30" × 20 yds. | 63.29   |
| CLR1020305 | 30" × 50 yds. | 148.06  |
| CLR1020362 | 36" × 20 yds. | 70.14   |
| CLR1020365 | 36" × 50 yds. | 165.52  |

### Clearprint 1025 Papercloth Vellum

Papercloth is especially recommended for quality ink drawings. This extremely durable 22 lb. vellum is made from 100% new cotton fibers. Papercloth is a special favorite of architects and artists for ink drawing and brush work.

| NO.          | PKG. (100 SHTS) | PRICE   |
|--------------|-----------------|---------|
| CLR102511100 | 8½" × 11"       | \$35.69 |
| CLR102517100 | 11" × 17"       | 67.36   |
| CLR102522100 | 17" × 22"       | 128.02  |
| CLR102524100 | 18" × 24"       | 139.72  |

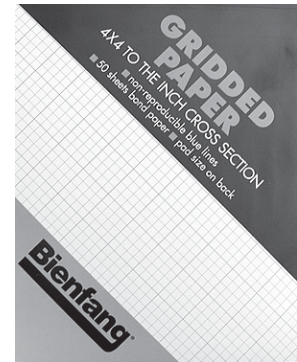
| NO.        | ROLL SIZE     | PRICE    |
|------------|---------------|----------|
| CLR1025245 | 24" × 50 yds. | \$147.29 |
| CLR1025305 | 30" × 50 yds. | 162.28   |
| CLR1025365 | 36" × 50 yds. | 181.64   |



### Tissue Thin Sketching Papers

Very transparent, lightweight paper for thumbnail, primary sketches and roughs by illustrators, architects and engineers. An excellent sheet for "swipes" from blueprints. 50-yard rolls. No. AIF35C—Canary Yellow; No. AIF35W—White, or No. AIF35B—Buff.

| NO.          | SIZE | PRICE/ROLL |
|--------------|------|------------|
| AIF35C,W,B12 | 12"  | \$10.75    |
| AIF35C,W,B14 | 14"  | 11.95      |
| AIF35C,W,B16 | 16"  | 13.95      |
| AIF35C,W,B18 | 18"  | 14.95      |
| AIF35C,W,B24 | 24"  | 18.95      |
| AIF35C,W,B30 | 30"  | 24.95      |
| AIF35C,W,B36 | 36"  | 28.95      |
| AIF35C,W,B42 | 42"  | 33.95      |



### Designer Grid Cross Section Pads

Printed on both sides in non-reproducible blue ink on a strong durable white stock. Lines are sharp, square and uniform. Takes pen and ink as well as pencil. Excellent erasing qualities.

| NO.       | SIZE      | GRID SIZE     | PRICE  |
|-----------|-----------|---------------|--------|
| BFG910590 | 8½" × 11" | 4 × 4 to 1"   | \$6.95 |
| BFG910591 | 8½" × 11" | 8 × 8 to 1"   | 6.95   |
| BFG910592 | 8½" × 11" | 10 × 10 to 1" | 6.95   |
| BFG910596 | 17" × 22" | 4 × 4 to 1"   | 20.95  |
| BFG910597 | 17" × 22" | 8 × 8 to 1"   | 20.95  |
| BFG910598 | 17" × 22" | 10 × 10 to 1" | 20.95  |

## BRISTOL BOARDS

### Strathmore Bristol Board

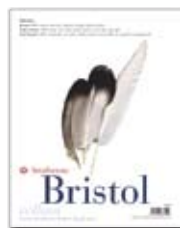
This rugged, 100% cotton fiber board takes repeated erasures and reworking without feathering. Medium (kid or vellum) surface for almost any technique. High (plate or smooth) finish designed for pen or pencil work; holds the most delicate lines. Useable on both sides. Each ply equivalent to a 55 lb. paper.

| MEDIUM SURFACE NO. | HIGH SURFACE NO. | PLY | SHTS/ SIZE | PKG | PRICE/ SHT |
|--------------------|------------------|-----|------------|-----|------------|
| STR23561           | STR23571         | 1   | 23" × 29"  | 25  | \$3.40     |
| STR23562           | STR23572         | 2   | 23" × 29"  | 25  | 6.90       |
| STR23563           | STR23573         | 3   | 23" × 29"  | 25  | 10.60      |
| STR23564           | STR23574         | 4   | 23" × 29"  | 25  | 14.20      |
| STR23562           | STR23572         | 2   | 30" × 40"  | 50  | 12.00      |
| STR23563           | STR23573         | 3   | 30" × 40"  | 50  | 18.45      |
| STR23564           | STR23574         | 4   | 30" × 40"  | 25  | 24.85      |

### Strathmore Patent Office Board

A 100% cotton fiber board designed to meet the exacting standards of the U.S. Patent Office. Sheets are heavyweight plate surface packaged 12 sheets and priced per sheet.

| NO.      | SIZE                               | PRICE  |
|----------|------------------------------------|--------|
| STR13527 | 8¼" × 11½" (A4—international size) | \$1.85 |



### Strathmore Bristol Board Pads

Same bristol board as above except in pad form. Size: 11" × 14". 12 pads per package.

| NO.      | SURFACE | PLY | SHT/PAD | PRICE/PAD |
|----------|---------|-----|---------|-----------|
| STR58062 | Medium  | 2   | 15      | \$22.00   |
| STR58072 | High    | 2   | 15      | 23.50     |

### AIF White Bristol Board

An inexpensive, opaque white bristol with a vellum finish—ideal for painting with gouache. Also used for mounting.

| NO.     | SIZE        | WEIGHT  | SHT/PKG. | PRICE/SHT |
|---------|-------------|---------|----------|-----------|
| AIFBB2V | 22½" × 28½" | 120 lb. | 100      | \$2.29    |
| AIFBB3V | 22½" × 28½" | 140 lb. | 100      | 3.19      |

### White Index Bristol Board

An inexpensive white board for mounting and dummies—smooth finish.

| NO.     | SIZE        | WEIGHT  | PRICE  |
|---------|-------------|---------|--------|
| AIFSI   | 22½" × 28½" | 110 lb. | \$1.19 |
| AIFSH   | 22½" × 28½" | 140 lb. | 1.29   |
| AIFFI36 | 24" × 36"   | 110 lb. | 1.35   |

### Drawing Bristol Board Pads

Two surfaces: Vellum or Plate. 2-ply thickness only. 20 sheets to a pad.

| VELLUM NO. | PLATE NO. | SIZE      | PRICE/PAD |
|------------|-----------|-----------|-----------|
| BR120V12   | BR120P12  | 9" × 12"  | \$10.66   |
| BR120V14   | BR120P14  | 11" × 14" | 14.66     |
| BR120V17   | BR120P17  | 14" × 17" | 22.16     |
| BR120V24   | BR120P24  | 19" × 24" | 38.50     |

## WATERCOLOR PAPERS



### Strathmore Watercolor Pad

Fine paper with a strong, rough surface for repeated washes and scrubbing. 130 lb. weight. Spiral-bound. 12 sheets per pad.

| NO.     | SIZE      | PRICE/PAD |
|---------|-----------|-----------|
| STR4401 | 9" x 12"  | \$9.20    |
| STR4402 | 11" x 15" | 12.20     |
| STR4403 | 12" x 18" | 16.15     |
| STR4404 | 15" x 22" | 21.60     |
| STR4405 | 18" x 24" | 27.60     |



### Arches Watercolor Papers

Made in France; a very fine quality, 100% rag paper available in HP (Hot Pressed), CP (Cold Pressed) and R (Rough) surfaces. (Please specify desired surface when ordering). Size: 22" x 30". 25 sheets per package.

| NO.     | WEIGHT  | PRICE/SHEET |
|---------|---------|-------------|
| ARHP90  | 90 lb.  | \$5.70      |
| ARHP140 | 140 lb. | 8.00        |
| ARHP300 | 300 lb. | 18.40       |



### Arches Watercolor Paper Blocks

100% cotton mould-made with pure gelatin. Flawless textures, cold pressed, hot pressed and rough. Natural white. Surface textures available are HP (Hot Press), CP (Cold Press), R (Rough). 140 lb. 20 sheets per block.

| NO.    | SIZE      | PRICE   |
|--------|-----------|---------|
| ARH140 | 7" x 10"  | \$33.60 |
| ARH140 | 9" x 12"  | 40.95   |
| ARH140 | 10" x 14" | 49.80   |
| ARH140 | 12" x 16" | 59.80   |
| ARH140 | 14" x 20" | 77.30   |
| ARH140 | 18" x 24" | 109.75  |



### Canson 100 Watercolor Paper

Canson 100 is mould-made, acid-free, 100% cotton watercolor paper with a twist. Canson 100 combines two grains in a single sheet: a rough grain for bolder effects and a cold press grain for more delicate effects. Size: 22" x 30".

| NO.       | DESCRIPTION              | PRICE/SHEET |
|-----------|--------------------------|-------------|
| CAN199948 | 140 lb. Rough/Cold Press | \$5.20      |
| CAN199949 | 300 lb. Rough/Cold Press | 12.10       |

## PRINTMAKING PAPERS



### Arches "88" Silkscreen

Mould-made in France of 100% cotton, neutral PH, unsized, it absorbs ink freely, avoiding build-up and glare, smooth surface, two natural decks, two tear decks.

| NO.       | SIZE      | WEIGHT  | COLOR | PRICE  |
|-----------|-----------|---------|-------|--------|
| ARH882230 | 22" x 30" | GSM 300 | White | \$6.45 |

### Arches Cover

Mould-made 100% cotton paper, neutral pH, lightly sized, cold press surface, two natural decks, two tear decks.

| NO.       | SIZE      | WEIGHT  | COLOR | PRICE  |
|-----------|-----------|---------|-------|--------|
| ARHCW2230 | 22" x 30" | GSM 250 | White | \$5.35 |
| ARHCW2941 | 29" x 41" | GSM 270 | White | 9.65   |

### Rives BFK

Mouldmade paper of 100% cotton, neutral pH, internally sized, vellum surface, two natural decks, two tear decks.

| NO.       | SIZE      | WEIGHT  | COLOR | PRICE  |
|-----------|-----------|---------|-------|--------|
| RBFKW2230 | 22" x 30" | GSM 250 | White | \$7.84 |
| RBFKC2230 | 22" x 30" | GSM 250 | Cream | 6.35   |
| RBFKW2941 | 29" x 41" | GSM 270 | White | 13.20  |

### Vegetable Parchment

Machine-made in the USA of 100% sulphite, has a mottled translucent appearance, no decks.

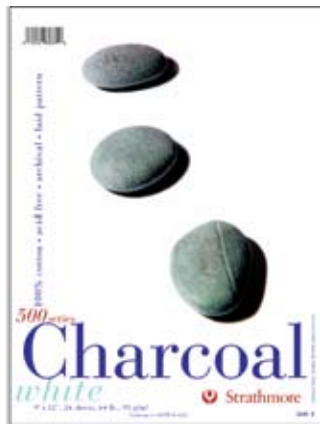
| NO.      | SIZE      | WEIGHT | COLOR         | PRICE  |
|----------|-----------|--------|---------------|--------|
| VEGPARCH | 25" x 38" | GSM 90 | Mottled White | \$2.41 |

### Glassine

Machine-made in the USA of 100% sulphite, neutral PH, non-buffered translucent interleaving, no decks.

| NO.       | SIZE      | WEIGHT | COLOR | PRICE  |
|-----------|-----------|--------|-------|--------|
| GLASS2436 | 24" x 36" | GSM 33 | White | \$1.13 |

## CHARCOAL PAPERS



### Strathmore Charcoal Paper Pads

This 100% cotton fiber paper has a traditional laid pattern and provides the proper resistance for precise shading with charcoal and pastels. Raised texture makes it a fascinating surface for many mediums. 24 sheets per pad. 560-White or 561-Assorted.

| NO. WHITE | NO. ASST. | PAD SIZE  | PRICE/PAD |
|-----------|-----------|-----------|-----------|
| STR5601   | STR5611   | 9" x 12"  | \$9.40    |
| STR5602   | STR5612   | 12" x 18" | 15.50     |
| STR5603   | STR5613   | 18" x 24" | 25.40     |

### Strathmore Charcoal Papers

Same as Charcoal Paper Pads except in individual sheets with deckle edge. Size: 19" x 25". 25 sheets per package.

| NO.      | COLOR         | PRICE/SHT |
|----------|---------------|-----------|
| STR60121 | Fog Blue      | \$1.75    |
| STR60123 | Pottery Green |           |
| STR60124 | Peachblow     |           |
| STR60125 | Cadet Blue    |           |
| STR60126 | Golden Brown  |           |
| STR60128 | Velvet Gray   |           |
| STR60129 | Storm Gray    |           |
| STR60130 | White         |           |
| STR60131 | Black         |           |
| STR60132 | Bright White  |           |
| STR60135 | Rose Gray     |           |
| STR60136 | Blue Gray     |           |

## STRATHMORE GREEN PRODUCTS



Windpower™  
Renewable Energy

### STRATHMORE WINDPOWER SERIES

Fine papers made with emissions-free, wind-generated electricity through the purchase of 100% certified renewable energy.



#### Strathmore Windpower Vellum Bristol Pads

This single-ply, heavyweight environmentally friendly Bristol is designed to accept pencil, pastel, charcoal and airbrush. Tape bound.

| NO.       | SIZE      | PRICE  |
|-----------|-----------|--------|
| STR642109 | 9" × 12"  | \$6.80 |
| STR642111 | 11" × 14" | 9.10   |
| STR642114 | 14" × 17" | 14.00  |
| STR642119 | 19" × 24" | 23.20  |



#### Strathmore Windpower Sketch Pads

This lightly textured, medium weight environmentally friendly paper works well with any dry media. Micro-perforated for easy sheet removal. Contains 30% post-consumer fiber. Spiral bound.

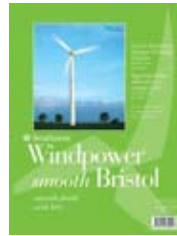
| NO.      | SIZE       | PRICE  |
|----------|------------|--------|
| STR6576  | 6¼" × 8½"  | \$5.65 |
| STR6579  | 9¾" × 12"  | 9.15   |
| STR65711 | 11¾" × 14" | 11.45  |
| STR65714 | 14¾" × 17" | 17.20  |
| STR65718 | 18" × 24½" | 21.60  |



#### Strathmore Windpower Drawing Pads

A bright white heavyweight environmentally friendly drawing paper is perfect for finished artwork. This bright white paper is ideal for working with pencil, pen, charcoal, or pastels. Micro-perforated for easy sheet removal. Contains 30% post-consumer fiber. Spiral bound.

| NO.      | SIZE       | PRICE  |
|----------|------------|--------|
| STR6439  | 9½" × 12"  | \$7.55 |
| STR64311 | 11½" × 14" | 10.15  |
| STR64314 | 14½" × 17" | 13.50  |
| STR64318 | 18" × 24½" | 20.40  |



#### Strathmore Windpower Smooth Bristol Pads

This single-ply, heavyweight environmentally friendly Bristol is designed to accept pen and ink, pencil, mechanical drawing and airbrush. Tape bound.

| NO.      | SIZE      | PRICE  |
|----------|-----------|--------|
| STR6429  | 9" × 12"  | \$6.80 |
| STR64211 | 11" × 14" | 9.10   |
| STR64214 | 14" × 17" | 14.00  |
| STR64219 | 19" × 24" | 23.20  |



#### Strathmore Windpower Watercolor Pads

This natural white, cold press paper is suitable for all wet media techniques, including watercolor, gouache and acrylic. It is acid-free and has excellent wash and lifting properties. Ideal for mastering watercolor techniques or for finished artwork. Spiral bound.

| NO.      | SIZE      | PRICE  |
|----------|-----------|--------|
| STR6406  | 6" × 9"   | \$6.75 |
| STR6409  | 9" × 12"  | 10.20  |
| STR64011 | 11" × 15" | 13.60  |
| STR64018 | 18" × 24" | 31.60  |

98

PAPER, BOARDS, ACETATE



Recycled Materials

### STRATHMORE RECYCLED SERIES

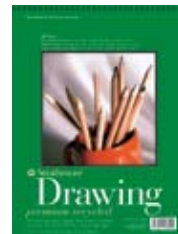
This premium recycled series of pads maximizes the use of recycled fibers to include high levels of post-consumer waste fibers. By using recycled materials in the papermaking process, Strathmore diverts waste from landfills, consumes less energy, and uses less water than if using virgin fibers.



#### Strathmore Recycled Sketch Pads

This general all-purpose heavyweight sketch paper is great for experimentation or perfecting techniques. Contains 30% post-consumer fiber. Spiral bound.

| NO       | SIZE      | PRICE  |
|----------|-----------|--------|
| STR4573  | 3½" × 5"  | \$4.00 |
| STR4575  | 5½" × 8½" | 7.15   |
| STR4579  | 9" × 12"  | 11.75  |
| STR45711 | 11" × 14" | 16.10  |
| STR45714 | 14" × 17" | 23.00  |
| STR45718 | 18" × 24" | 16.20  |



#### Strathmore Recycled Drawing Pads

This bright white paper is ideal for all dry media, suitable for pen and ink. Contains 30% post-consumer fiber. Spiral bound.

| NO       | SIZE      | PRICE  |
|----------|-----------|--------|
| STR4439  | 9" × 12"  | \$6.70 |
| STR44311 | 11" × 14" | 9.10   |
| STR44314 | 14" × 17" | 12.10  |
| STR44318 | 18" × 24" | 18.25  |



#### Strathmore Hemp Charcoal Pad

This 400 series, acid-free hemp charcoal pad consists of 25% hemp fibers and 75% post consumer waste fibers, and contains no virgin wood. This paper has a traditional laid finish and provides an ideal foundation for charcoal and pastel. Also suitable for oil crayon and other dry media.

| NO        | SIZE      | PRICE  |
|-----------|-----------|--------|
| STR444106 | 6" × 9"   | \$4.50 |
| STR444109 | 9" × 12"  | 7.85   |
| STR444112 | 12" × 12" | 10.80  |
| STR444118 | 6" × 18"  | 9.75   |

# studio goods®



## Studio Goods Artist Journals

These beautiful hardbound journals are covered in fine European book cloth and filled with 200 acid-free blank pages.

| NO.      | DESCRIPTION              | PRICE   |
|----------|--------------------------|---------|
| STG24693 | 9" x 6" Twilight         | \$12.99 |
| STG24694 | 9" x 6" Orchid           | 12.99   |
| STG24696 | 9" x 6" Milk Chocolate   | 12.99   |
| STG24692 | 9" x 6" Linen            | 12.99   |
| STG24691 | 9" x 6" Black            | 12.99   |
| STG24695 | 9" x 6" New Leaf         | 12.99   |
| STG24853 | 11" x 8½" Twilight       | 19.99   |
| STG24854 | 11" x 8½" Orchid         | 19.99   |
| STG24856 | 11" x 8½" Milk Chocolate | 19.99   |
| STG24852 | 11" x 8½" Linen          | 19.99   |
| STG24851 | 11" x 8½" Black          | 19.99   |
| STG24855 | 11" x 8½" New Leaf       | 19.99   |



## Canson Recycled Spiral Sketch Pad

100% recycled, acid-free paper.  
10% post-consumer waste.

| NO.       | SIZE      | PRICE  |
|-----------|-----------|--------|
| CAN702531 | 9" x 12"  | \$8.55 |
| CAN702532 | 11" x 14" | 12.10  |
| CAN702533 | 14" x 17" | 17.80  |
| CAN702534 | 19" x 24" | 13.35  |

Prices are subject to change.



## Moleskine Pocket & Large Notebooks

The legendary notebook of Hemingway, Picasso, and Chatwin, these unique notebooks are bound in cardboard, feature a "Moleskine" cover and have thread-bound acid-free pages. Each notebook has an elastic closure and an expandable inner note holder made of cardboard and cloth. Notebooks are available in: ruled, plain, squared, and sketchbook weight and the storyboard layout is available in the pocket size.

| NO.      | DESCRIPTION          | PRICE   |
|----------|----------------------|---------|
| KKLMB710 | 3½" x 5½" Lined      | \$12.00 |
| KKLMB712 | 3½" x 5½" Squared    | 12.00   |
| KKLMB713 | 3½" x 5½" Sketch     | 12.00   |
| KKLMB717 | 3½" x 5½" Plain      | 12.00   |
| KKLMB802 | 3½" x 5½" Storyboard | 12.00   |
| KKLMBL13 | 5½" x 8" Sketch      | 17.95   |
| KKLMBL14 | 5½" x 8" Ruled       | 17.95   |
| KKLMBL15 | 5½" x 8" Squared     | 17.95   |
| KKLMBL17 | 5½" x 8" Plain       | 17.95   |



## Bienfang Note Sketch Pads

These 64-sheet pads are unique for sketching in that each sheet is 50% ruled for sketching and note taking. The 5½" x 8½" pad has a horizontal format and the 8½" x 11" pads come in a horizontal or vertical format.

| NO.       | DESCRIPTION          | PRICE  |
|-----------|----------------------|--------|
| BFG239100 | 5½" x 8½" Horizontal | \$7.59 |
| BFG239101 | 8½" x 11" Vertical   | 10.95  |
| BFG239102 | 8½" x 11" Horizontal | 10.95  |



## Classic Black Sketch Books

Hardbound and Wirebound Edition Smyth-sewn for durability and flexibility. Made with quality drawing paper, suitable for all dry techniques. The paper has a medium tooth with excellent erasure characteristics and is acid-free, 70 lb. (216 gsm).

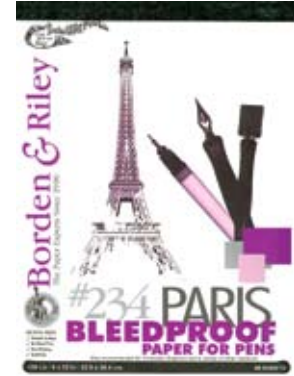
| HARDBOUND | SIZE      | PRICE   |
|-----------|-----------|---------|
| CAH1001   | 4" x 6"   | \$8.95  |
| CAH1002   | 5" x 8"   | 11.50   |
| CAH1003   | 8½" x 11" | 15.65   |
| CAH1004   | 11" x 14" | 23.05   |
| CAH1005   | 9" x 6"   | 15.70   |
| CAH1006   | 11" x 8"  | 20.95   |
| WIREBOUND | SIZE      | PRICE   |
| CAH1021   | 5" x 7"   | \$11.50 |
| CAH1022   | 6" x 6"   | 11.15   |
| CAH1023   | 7" x 10"  | 16.85   |
| CAH1024   | 9" x 12"  | 20.95   |
| CAH1025   | 10" x 10" | 21.95   |
| CAH1026   | 11" x 14" | 26.55   |



## Strathmore Spiral Sketch Pad

This general purpose, heavyweight, 60 lb. sketch paper is intended for practice of techniques or quick studies with any dry media. Pad is spiral bound on the side and has 100 sheets.

| NO.     | SIZE      | PRICE   |
|---------|-----------|---------|
| STR4553 | 9" x 12"  | \$11.75 |
| STR4554 | 11" x 14" | 16.10   |
| STR4555 | 14" x 17" | 23.00   |
| STR4558 | 5½" x 8½" | 7.15    |



## Borden & Riley "Paris Paper for Pens"

Considered the finest paper in the industry for all kinds of pen and ink work. A smooth hard surface for every type of pen, including, technical, dip, and ruling pen. No feathering, bleeding nor breaking up of the fine lines. Acid-free paper, 40 sheets per pad.

| NO.     | SIZE      | PRICE   |
|---------|-----------|---------|
| BR2349  | 9" x 12"  | \$13.98 |
| BR23411 | 11" x 14" | 18.11   |
| BR23414 | 14" x 17" | 24.43   |
| BR23419 | 19" x 24" | 45.54   |

## NEWSPRINT

### Newsprint Pads

The groundwood sheet on which newspapers are printed. Available in a smooth or rough surface. 50 sheets per pad. Smooth-AIFNPS; Rough-AIFNPR

| NO.  | PAD SIZE  | PRICE/PAD |
|------|-----------|-----------|
| 912  | 9" x 12"  | \$5.45    |
| 1218 | 12" x 18" | 7.95      |
| 1417 | 14" x 17" | 8.75      |
| 1824 | 18" x 24" | 13.50     |

### Newsprint Reams (500 Sheets)

Smooth-AIFNPS; Rough-AIFNPS

| NO.    | SIZE      | PRICE   |
|--------|-----------|---------|
| 24REAM | 18" x 24" | \$54.95 |
| 36REAM | 24" x 36" | 107.95  |

### Newsprint Rolls

Smooth only.

| NO.         | SIZE       | PRICE   |
|-------------|------------|---------|
| AIFNP13     | 13" x 500' | \$59.95 |
| AIFNP17     | 17" x 600' | 64.95   |
| AIFNPS36100 | 36" x 100' | 31.95   |

## FILMS

### Acetate Pads

Available in either clear (transparent) or matte (frosted). Perfect for overlays and separations. 25 sheets per pad. 6 pads per package. Biodegradable.

| PAD SIZE    | THICKNESS | PRICE/PAD | THICKNESS   | PRICE/PAD |
|-------------|-----------|-----------|-------------|-----------|
| 3 PT. CLEAR |           |           | 3 PT. MATTE |           |
| 9" x 12"    | ACE3C12   | \$11.65   | ACE3M12     | \$17.89   |
| 11" x 14"   | ACE3C14   | 16.65     | ACE3M14     | 24.55     |
| 14" x 17"   | ACE3C17   | 22.85     | ACE3M17     | 34.35     |
| 19" x 24"   | ACE3C24   | 41.69     | ACE3M24     | 67.50     |

| PAD SIZE    | THICKNESS | PRICE/PAD | THICKNESS   | PRICE/PAD |
|-------------|-----------|-----------|-------------|-----------|
| 5 PT. CLEAR |           |           | 5 PT. MATTE |           |
| 9" x 12"    | ACE5C12   | \$15.49   | ACE5M12     | \$23.00   |
| 11" x 14"   | ACE5C14   | 21.95     | ACE5M14     | 31.50     |
| 14" x 17"   | ACE5C17   | 31.59     | ACE5M17     | 45.20     |
| 19" x 24"   | ACE5C24   | 59.60     | ACE5M24     | 89.64     |

### Rosco Art Colored Acetates

For the preparation of slide and presentation art, these brilliantly colored acetate gels are optically clear and project vividly. An exciting array of 35 hues for artists' uses. 5 mil. thickness.

| NO.   | SIZE      | PRICE/SHEET |
|-------|-----------|-------------|
| ROS24 | 20" x 24" | \$7.95      |

| NO.   | DESCRIPTION        | PRICE  |
|-------|--------------------|--------|
| ROSSB | 4" x 1" Swatchbook | \$4.25 |

### Clear Acetate Sheets and Rolls

| NO.       | SIZE      | DESCRIPTION | THICKNESS | PRICE  |
|-----------|-----------|-------------|-----------|--------|
| ACE3C40S  | 25" x 40" | Sheet       | 0.003     | \$2.59 |
| ACE5C40S  | 25" x 40" | Sheet       | 0.005     | 3.95   |
| ACE7C40S  | 25" x 40" | Sheet       | 0.0075    | 6.80   |
| ACE10C40S | 25" x 40" | Sheet       | 0.010     | 9.60   |
| ACE3C20S  | 20" x 50" | Roll        | 0.003     | 35.99  |
| ACE3C40S  | 40" x 50" | Roll        | 0.003     | 62.25  |
| ACE5C20S  | 20" x 50" | Roll        | 0.005     | 55.69  |
| ACE5C40S  | 40" x 50" | Roll        | 0.005     | 98.00  |

### Adhesive-Back Dura-Lar Metallic

Gleaming mirror-like finish. Dimensionally stable. For package design, displays and other applications; 0.002 mil. thickness. Sheet size: 20" x 26".

| NO.      | COLOR  | PRICE/SHEET |
|----------|--------|-------------|
| AIFABMGD | Gold   | \$4.99      |
| AIFABMSR | Silver | 4.99        |

### Adhesive-Back Dura-Lar Clear

Clear mylar (0.005 mil. thickness). Removable adhesive backing, optically clear, will not yellow or tear.

| NO.    | SIZE      | PRICE/SHEET |
|--------|-----------|-------------|
| AIFABP | 20" x 25" | \$9.50      |

### Prepared Acetate

Crystal clear, this specially treated acetate (0.005) takes paint like paper. Use any watercolors—temperas, inks, etc. Easy to make corrections—paint can be removed with water; won't affect the surface. The special coating is on both sides. 12 sheets per pad.

| NO.     | SHEET/SIZE | SHEET/PKG | PRICE/SHT |
|---------|------------|-----------|-----------|
| ACEP12S | 9" x 12"   | 25        | \$3.89    |
| ACEP14S | 11" x 14"  | 25        | 5.19      |
| ACEP17S | 14" x 17"  | 25        | 6.95      |
| ACEP25S | 20" x 25"  | 25        | 7.69      |
| ACEP40S | 25" x 40"  | 25        | 19.29     |

| NO.    | PAD SIZE  | PADS/PKG | PRICE/PAD |
|--------|-----------|----------|-----------|
| ACEP12 | 9" x 12"  | 6        | \$28.00   |
| ACEP14 | 11" x 14" | 6        | 37.95     |
| ACEP17 | 14" x 17" | 6        | 55.40     |
| ACEP24 | 19" x 24" | 6        | 107.05    |

| NO.      | ROLL SIZE | PRICE/ROLL |
|----------|-----------|------------|
| ACEP20SR | 20" x 50" | \$234.56   |
| ACEP40SR | 40" x 50" | 413.45     |

## DRAFTING, COPIER & APPLIQUE FILMS

### Azon Herculene Static-Free Drafting Film

Virtually indestructible; provides maximum durability and drafting performance with pencil or ink. Both the polyester film base and the coating are permanently transparent, waterproof and unaffected by aging. Specially treated—will not attract nor hold dirt, dust, eraser particles.

| NO.       | DESCRIPTION         |
|-----------|---------------------|
| AZN191153 | 3 mil Matte—1 side  |
| AZN191253 | 3 mil Matte—2 sides |
| AZN191254 | 4 mil Matte—2 sides |

| NO. | SIZE      | SHT/PKG. | PRICE 3 MIL 1 SIDE | PRICE 3 MIL 2 SIDES | PRICE 4 MIL 2 SIDES |
|-----|-----------|----------|--------------------|---------------------|---------------------|
| 11  | 8½" x 11" | 100      | \$67.54            | \$62.05             | \$78.23             |
| 17  | 11" x 17" | 100      | 129.30             | 163.34              | 189.23              |
| 36  | 24" x 36" | 25       | 175.93             | 180.71              | 202.03              |
| 302 | 30" x 20" | Roll     | 159.01             | 232.87              | 220.03              |
| 362 | 36" x 20" | Roll     | 193.35             | 194.05              | 220.03              |
| 422 | 42" x 20" | Roll     | 220.67             | 233.72              | 240.75              |

### Daf Drafting & Design Applique Film

Eliminate repetitive drawing—use Daf to transfer typed, photocopied or printed material to plans, drawings, designs and mechanical art. Matte surface with a permanent adhesive. 100 sheet package.

| NO.       | SIZE      | PRICE    |
|-----------|-----------|----------|
| CHPDFAF8  | 8½" x 11" | \$123.60 |
| CHPDFAF14 | 8½" x 14" | 179.60   |
| CHPDFAF11 | 11" x 17" | 277.10   |

## FRISKETS



### Frisk Film

Ready-to-use; a rubber cement base for a firm yet temporary bond. Cuts easily and sharply with crisp, neat edges.

| NO.      | FINISH | SIZE         | TYPE   | PRICE   |
|----------|--------|--------------|--------|---------|
| FSKG25   | Gloss  | 20" x 25"    | Pkg 10 | \$60.39 |
| FSKG254  | Gloss  | 25" x 4 yd.  | Roll   | 47.69   |
| FSKG2510 | Gloss  | 25" x 10 yd. | Roll   | 84.79   |
| FSKM25   | Matte  | 20" x 25"    | Pkg 10 | 60.39   |
| FSKM254  | Matte  | 25" x 4 yd.  | Roll   | 47.69   |
| FSKM2510 | Matte  | 25" x 10 yd. | Roll   | 84.79   |
| FSKG154  | Gloss  | 15" x 4 yd.  | Roll   | 23.29   |
| FSKG15   | Gloss  | 15" x 10"    | Pkg 8  | 19.99   |
| FSKM154  | Matte  | 15" x 4 yd.  | Roll   | 23.29   |
| FSKM15   | Matte  | 15" x 10"    | Pkg 8  | 19.99   |

## COLOR-AID PAPERS

### Color-Aid Papers

Silk-screen coated with flat, matte color that will not bleed, "Color-Aid" papers take pencil, pastel, ink, tempera and acrylics. Water-resistant surface; serviceable weight heavy enough to withstand handling. Available in 314 coordinated colors: 24 basic hues, 4 tints and 3 shades of each hue, 16 grays, black and white.

| NO.   | SIZE      | PRICE  |
|-------|-----------|--------|
| COL24 | 18" x 24" | \$8.90 |
| COL36 | 24" x 36" | 16.03  |

### Color-Aid Packet

Contains 314 coordinated colors. A helpful teaching aid for learning color theory and design. Available in 2" x 3", 4½" x 6" and 6" x 9" sizes.

| NO.     | SIZE     | PRICE   |
|---------|----------|---------|
| COL3    | 2" x 3"  | \$37.26 |
| COL6314 | 4½" x 6" | 94.50   |
| COL9    | 6" x 9"  | 165.24  |

### Color-Aid Swatchbook

Contains swatches of 314 coordinated colors. Back of each swatch keyed and numbered for use in reordering larger sheets. Brief description of color mixing, including color wheel. Handy convenient size in an acetate cover.

| NO.   | SIZE    | PRICE   |
|-------|---------|---------|
| COLSW | 2" x 4" | \$46.44 |

**COLORED PAPERS**

*continued on p102*

**STARDREAM METALLIC TEXT & COVER STOCK**

Machine-made in Italy of 100% sulphite. These premium papers are two-sided stock enhanced with metallic glitter. Available in text and cover stock weights, this paper can be printed offset, letterpress, silkscreen, foil stamped, blind embossed, as well as laser and inkjet compatible.

The 81 lb. Text is available in 100 sheets per package. The 105 lb. 8½" × 11" Cover stock is available in 50-sheet packs and the 28½" × 40½" Cover is available in 25-sheet packs.



| NO. | COLOR GROUP #1        | NO. | COLOR GROUP #1         |
|-----|-----------------------|-----|------------------------|
| AM  | Amethyst (Lavender)   | OL  | Opal                   |
| AT  | Anthracite (Charcoal) | ML  | Malachite (Blue Green) |
| BZ  | Bronze                | OX  | Onyx                   |
| CT  | Citrine               | QZ  | Quartz                 |
| CR  | Copper                | RY  | Ruby                   |
| CY  | Crystal               | SA  | Sapphire               |
| GD  | Gold                  | SV  | Silver                 |

| NO. | COLOR GROUP #2    | NO. | COLOR GROUP #2 |
|-----|-------------------|-----|----------------|
| AG  | Antique Gold      | EM  | Emerald        |
| JP  | Jupiter (Red)     | MA  | Mars (Red)     |
| LP  | Lapis (Dark Blue) |     |                |

**Stardream 81 lb. Text**

| NO.       | GROUP/ SIZE  | PRICE/ SHEET |
|-----------|--------------|--------------|
| STRDT8511 | #1/8½" × 11" | \$.49        |
| STRDT1117 | #1/11" × 17" | .95          |
| STRDT8511 | #2/8½" × 11" | .65          |
| STRDT1117 | #2/11" × 17" | 1.05         |

**Stardream 105 lb. Cover**

| NO.       | GROUP/ SIZE  | PRICE/ SHEET |
|-----------|--------------|--------------|
| STRDC8511 | #1/8½" × 11" | \$.95        |
| STRDC1117 | #1/11" × 17" | 2.19         |
| STRDC8511 | #2/8½" × 11" | 1.19         |
| STRDC1117 | #2/11" × 17" | 2.29         |

**Stardream 105 lb. Cover 28½" x 40½"**

| NO.    | COLOR GROUP | PRICE/ SHEET |
|--------|-------------|--------------|
| STDC40 | Group #1    | \$7.35       |
| STDC40 | Group #2    | 7.35         |

**STARDREAM CHIARA METALLIC TEXT & COVER STOCK**

Adding to the above designer colors, the Chiara range includes six pastel shades, reminiscent of the actual gemstones. 81 lb. Text has 100 sheets per pack and 105 lb. Cover has 50 sheets per pack.



| NO. | COLOR      | NO. | COLOR       |
|-----|------------|-----|-------------|
| AQ  | Aquamarine | KU  | Kunzite     |
| AM  | Amber      | RQ  | Rose Quartz |
| CR  | Coral      | SP  | Serpentine  |

**Stardream 81 lb. Chiara Text**

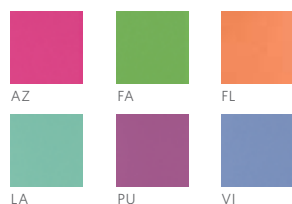
| NO.      | SIZE      | PRICE/ SHEET |
|----------|-----------|--------------|
| SDCT8511 | 8½" × 11" | \$.48        |
| SDCT1117 | 11" × 17" | .84          |

**Stardream 105 lb. Chiara Cover**

| NO.      | SIZE      | PRICE/ SHEET |
|----------|-----------|--------------|
| SDCC8511 | 8½" × 11" | \$.96        |
| SDCC1117 | 11" × 17" | 2.04         |

**STARDREAM FUSE METALLIC TEXT & COVER STOCK**

Fuse contains six intense rich and vibrant hues. 81 lb. Text and 105 lb. Cover is available.



| NO. | COLOR   | NO. | COLOR  |
|-----|---------|-----|--------|
| AZ  | Azalea  | LA  | Lagoon |
| FA  | Fairway | PU  | Punch  |
| FL  | Flame   | VI  | Vista  |

**Stardream 81 lb. Fuse Text**

| NO.      | SIZE      | PRICE/ SHEET |
|----------|-----------|--------------|
| SDIT8511 | 8½" × 11" | \$.57        |
| SDIT1117 | 11" × 17" | .99          |

**Stardream 105 lb. Fuse Cover**

| NO.      | SIZE      | PRICE/ SHEET |
|----------|-----------|--------------|
| SDIC8511 | 8½" × 11" | \$.11        |
| SDIC1117 | 11" × 17" | 2.34         |

**AURORA TEXT & COVER STOCK**

This unique paper was created using a one-of-a-kind wire embossed finish that enhances its lustrous color palette. The sheet's glistening effect is created by infusing the pulp with pure mica dust, producing the fabric-like feel on both sides of the paper. 81 lb. Text has 100 sheets per package; 105 lb. Cover has 50 sheets per pack.



| NO. | COLOR         | NO. | COLOR        |
|-----|---------------|-----|--------------|
| CM  | Champagne     | PF  | Pine Frost   |
| IC  | Icicle        | PH  | Purple Heart |
| LM  | Lavender Mist | PZ  | Pearl Haze   |
| MB  | Midnight Blue | SB  | Sky Blue     |

**Aurora 81 lb. Text**

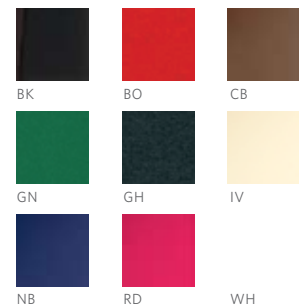
| NO.      | SIZE      | PRICE/ SHEET |
|----------|-----------|--------------|
| AURT8511 | 8½" × 11" | \$.30        |
| AURT1117 | 11" × 17" | .60          |

**Aurora 105 lb. Cover**

| NO.      | SIZE      | PRICE/ SHEET |
|----------|-----------|--------------|
| AURC8511 | 8½" × 11" | \$.44        |
| AURC1117 | 11" × 17" | .88          |

**PLIKE TEXT & COVER STOCK**

This "Plastic-like" paper is an innovative, unique product with a smooth, pleasant touch evocative of plastic and rubber. Thanks to its special surface treatment, Plike gives printing results that cannot be achieved with uncoated papers. Suitable for letterpress, offset, silkscreen, die cutting, thermography and lamination. Laser compatible.



| NO. | COLOR           | NO. | COLOR     |
|-----|-----------------|-----|-----------|
| BK  | Black           | IV  | Ivory     |
| BO  | Bordeaux        | NB  | Navy Blue |
| CB  | Chocolate Brown | RD  | Red       |
| GR  | Green           | WH  | White     |
| GH  | Graphite        |     |           |

**Plike 95 lb. Text**

| NO.      | SIZE      | PRICE/ SHEET |
|----------|-----------|--------------|
| PLKT8511 | 8½" × 11" | \$.48        |
| PLKT1117 | 11" × 17" | .96          |

**Plike 125 lb. Cover**

| NO.      | SIZE        | PRICE/ SHEET |
|----------|-------------|--------------|
| PLKC8511 | 81/2" × 11" | \$.11        |
| PLKC1117 | 11" × 17"   | 2.22         |

*Prices are subject to change.*

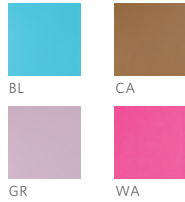
212.337.8600

**COLORED PAPERS**

*continued from p101*

**SORBET TEXT & COVER STOCK**

Color is the key ingredient, and often, the inspiration for almost any great design scheme. Sorbet is a terrific choice for countless applications including greeting cards, invitations, brochures and packaging—but also open your eyes to the excitement that this paper can bring to your next creative project. Sorbet is light, fast, lignin-free and acid-free.



| NO. | COLOR      | NO. | COLOR      |
|-----|------------|-----|------------|
| BL  | Blue Ice   | GR  | Grape      |
| CA  | Cappuccino | WA  | Watermelon |

**Sorbet 90 lb. Text**

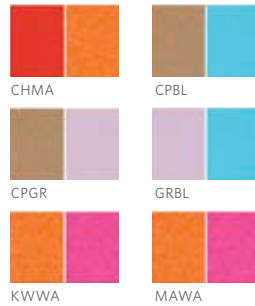
| NO.      | SIZE      | PRICE/SHEET |
|----------|-----------|-------------|
| SRBT8511 | 8½" × 11" | \$.21       |
| SRBT1117 | 11" × 17" | .42         |

**Sorbet 100 lb. Cover**

| NO.      | SIZE      | PRICE/SHEET |
|----------|-----------|-------------|
| SRBC8511 | 8½" × 11" | \$.42       |
| SRBC1117 | 11" × 17" | .84         |

**SORBET DUPLEX COVER STOCK**

With the same brilliance as the original line, each sheet is reversible giving you the very best in color combination from the Sorbet lineup.



| NO.  | COLOR               | NO.  | COLOR            |
|------|---------------------|------|------------------|
| CHMA | Cherry/Mango        | GRBL | Grape/Blue Ice   |
| CPBL | Cappuccino/Blue Ice | KWWA | Kiwi/Watermelon  |
| CPGR | Cappuccino/Grape    | MAWA | Mango/Watermelon |

**Sorbet Duplex 100 lb. Cover**

| NO.     | SIZE      | PRICE/SHEET |
|---------|-----------|-------------|
| SRB8511 | 8½" × 11" | \$.50       |
| SRB1117 | 11" × 17" | 1.08        |

**Canford Cover Papers**

A beautiful range of 52 vivid colors of matte paper in 70 lb. Suitable for presentations, flaps, pastels, and laser printing. Acid-free. Swatch book available.

| NO.     | DESCRIPTION    | SIZE      | PRICE |
|---------|----------------|-----------|-------|
| CANCP   | Colors         | 8½" × 11" | \$.50 |
| CANCPFG | Frosted Gold   | 8½" × 11" | .65   |
| CANCPFS | Frosted Silver | 8½" × 11" | .65   |
| CANP    | Colors         | 20" × 30" | 2.95  |
| CANPFG  | Frosted Gold   | 20" × 30" | 3.50  |
| CANPFS  | Frosted Silver | 20" × 30" | 3.50  |

| NO. | COLOR            |
|-----|------------------|
| JB  | Jet Black        |
| SW  | Snow White       |
| AQ  | Aqua             |
| AT  | Amethyst         |
| AZ  | Azure Blue       |
| BG  | Bubble Gum       |
| BC  | Buttercup        |
| BH  | Blush            |
| BR  | Bright Red       |
| BY  | Barley           |
| CH  | Champagne        |
| CO  | Coffee           |
| CW  | China White      |
| CY  | Cherry           |
| DRG | Dreadnought Grey |
| DY  | Dresden Yellow   |
| EB  | Electric Blue    |
| EM  | Emerald Green    |
| TG  | Tangerine        |
| FR  | Forest Green     |
| GM  | Gun Meta         |
| GR  | Guardsman Red    |
| IV  | Ivory            |
| IW  | Ice White        |
| JG  | Jewel Green      |

| NO. | COLOR         |
|-----|---------------|
| KF  | Kingfisher    |
| MC  | Mocha         |
| MN  | Mint          |
| NB  | Navy Blue     |
| OB  | Ocean Blue    |
| PL  | Pale Lilac    |
| PM  | Plum          |
| RB  | Royal Blue    |
| RG  | Russian Green |
| RP  | Royal Purple  |
| TC  | Terra Cotta   |

**Canford Card Stock Papers**

140 lb. Card with a matte surface in the same wide range of colors matching the Canford Cover papers. Acid-free. Swatch Book available.

| NO.     | DESCRIPTION    | SIZE      | PRICE |
|---------|----------------|-----------|-------|
| CANCC   | Colors         | 8½" × 11" | \$.80 |
| CANCCFG | Frosted Gold   | 8½" × 11" | .90   |
| CANCCFS | Frosted Silver | 8½" × 11" | .90   |
| CANCC   | Colors         | 20" × 30" | 4.95  |
| CANCCFG | Frosted Gold   | 20" × 30" | 5.65  |
| CANCCFS | Frosted Silver | 20" × 30" | 5.65  |

| NO. | COLOR      |
|-----|------------|
| JB  | Jet Black  |
| SW  | Snow White |
| AB  | Azure Blue |
| AQ  | Aqua       |
| AT  | Amethyst   |
| BC  | Buttercup  |
| BG  | Bubble Gum |
| BL  | Blush      |
| BR  | Bright Red |
| BY  | Barley     |
| CH  | Champagne  |
| CO  | Coffee     |

| NO. | COLOR            |
|-----|------------------|
| CW  | China White      |
| CY  | Cherry           |
| DRG | Dreadnought Grey |
| DY  | Dresden Yellow   |
| EB  | Electric Blue    |
| EM  | Emerald Green    |
| FR  | Forest Green     |
| GM  | Gun Metal        |
| GR  | Guardsman Red    |
| IV  | Ivory            |
| IW  | Ice White        |
| JG  | Jewel Green      |
| KF  | Kingfisher       |
| MC  | Mocha            |
| MN  | Mint             |
| NB  | Navy Blue        |
| OB  | Ocean Blue       |
| PL  | Pale Lilac       |
| PM  | Plum             |
| RB  | Royal Blue       |
| RG  | Russian Green    |
| RP  | Royal Purple     |
| TC  | Terra Cotta      |
| TG  | Tangerine        |

**Wyndstone Papers**

A fantastic selection of commercial papers including hard-to-find Corrugates, Marbles, Covers, Fly sheets, and decorative papers. Each style is sold by the sheet for design purposes and is available in production quantities for small or large runs at reduced prices. A free catalog is available on request, but the solution is to order the specifier which contains a swatch of all papers. A separate price list is also available.

| NO.  | DESCRIPTION         | PRICE   |
|------|---------------------|---------|
| WYNS | Wyndstone Specifier | \$39.95 |
| WYNC | Wyndstone Catalog   | n/c     |

**Designer Corrugated Cover**

Corrugated cover stock in a matte finish. 10 colors. Size: 26" x 40".

| NO.     | COLOR     | PRICE/SHEET |
|---------|-----------|-------------|
| DCCWE40 | White     | \$11.95     |
| DCCKT40 | Kraft     | 11.95       |
| DCCBK40 | Black     | 11.95       |
| DCCRD40 | Red       | 11.95       |
| DCCDB40 | Dark Blue | 11.95       |

**Color Art Rolls**

Bright colored fade-resistant 50 lb. art rolls are great for bulletin boards, murals and large art projects. Paper is colored throughout so it doesn't erase off.

| NO.      | COLOR       | SIZE      | PRICE/ROLL |
|----------|-------------|-----------|------------|
| CAR24WE  | White       | 24" x 60' | \$19.95    |
| CAR48WE  | White       | 48" x 50' | 27.95      |
| CAR24RD  | Red         | 24" x 60' | 19.95      |
| CAR48RD  | Red         | 48" x 50' | 27.95      |
| CAR24GN  | Green       | 24" x 60' | 19.95      |
| CAR48GN  | Green       | 48" x 50' | 27.95      |
| CAR24BBE | Bright Blue | 24" x 60' | 19.95      |
| CAR48BBE | Bright Blue | 48" x 50' | 27.95      |
| CAR24DBE | Dark Blue   | 24" x 60' | 19.95      |
| CAR48DBE | Dark Blue   | 48" x 50' | 27.95      |
| CAR24YW  | Yellow      | 24" x 60' | 19.95      |
| CAR48YW  | Yellow      | 48" x 50' | 27.95      |
| CAR24BK  | Black       | 24" x 60' | 19.95      |
| CAR48BK  | Black       | 48" x 50' | 27.95      |

**Half Width Seamless**

Same durable cover stock weight seamless as the larger rolls. These rolls are ideal for small photo background applications.

| NO.      | SIZE          | COLOR        | PRICE   |
|----------|---------------|--------------|---------|
| SUP53JET | 53" x 12 yds. | Jet Black    | \$49.95 |
| SUP53AW  | 53" x 12 yds. | Arctic White | 49.95   |

**Superior Wide Seamless Paper**

Oversized heavyweight paper that resists wrinkles and creases. 140" x 100".

| NO.      | COLOR | PRICE    |
|----------|-------|----------|
| SUP140BK | Black | \$279.00 |
| SUP140GY | Grey  | 279.00   |
| SUP140WE | White | 279.00   |

**TUF-FLOCK Velour Paper**

A paper-backed velour seamless paper ideal for backgrounds. 52" x 8 yds. Black.

| NO.     | PRICE   |
|---------|---------|
| SUPBF52 | \$69.95 |

**Superior Seamless Papers**

Seamless paper is used to create theatrical sets, visual merchandising displays, special event environments and photographic backgrounds. Superior Seamless is known for its wide assortment of vivid colors. Heavy paper resists wrinkles and creases. Rolls: 107" x 12 yds.

| NO.        | COLOR          | PRICE/ROLL |
|------------|----------------|------------|
| SUP107JET  | Jet Black      | \$87.95    |
| SUP107THG  | Thunder Gray   |            |
| SUP107NGY  | Neutral Gray   |            |
| SUP107DVG  | Dove Gray      |            |
| SUP107PSG  | Pursuit Gray   |            |
| SUP107SLTG | Slate Gray     |            |
| SUP107SLVT | Silvertone     |            |
| SUP107DAL  | Dull Alum      |            |
| SUP107DGY  | Dawn Gray      |            |
| SUP107SN   | Snow           |            |
| SUP107AW   | Arctic White   |            |
| SUP107DPB  | Deep Blue      |            |
| SUP107RYB  | Royal Blue     |            |
| SUP107MBE  | Marine Blue    |            |
| SUP107BLK  | Blue Lake      |            |
| SUP107NU   | Nassau         |            |
| SUP107COB  | Cobalt         |            |
| SUP107WW   | Wedgewood      |            |
| SUP107LBE  | Lite Blue      |            |
| SUP107SB   | Sky Blue       |            |
| SUP107AL   | Alpine         |            |
| SUP107AQ   | Aquamarine     |            |
| SUP107CCB  | Coco Brown     |            |
| SUP107NM   | Nutmeg         |            |
| SUP107SP   | Spice          |            |
| SUP107BE   | Beige          |            |
| SUP107PGE  | Pongee         |            |
| SUP107WHT  | Wheat          |            |
| SUP107IV   | Ivory          |            |
| SUP107FN   | Fawn           |            |
| SUP107CR   | Cream          |            |
| SUP107DGRN | Deep Green     |            |
| SSUP107MT  | Mint           |            |
| SUP107STG  | Stinger        |            |
| SUP107LF   | Leaf           |            |
| SUP107APL  | Apple          |            |
| SUP107TOPG | Tropical Green |            |
| SUP107ASP  | Aspen          |            |
| SUP107BF   | Buff           |            |
| SUP107FY   | Foysyth Yellow |            |
| SUP107YO   | Yellow Orange  |            |
| SUP107RT   | Russet         |            |
| SUP107FL   | Flame          |            |
| SUP107SC   | Scarlet        |            |
| SUP107BO   | Bright Orange  |            |
| SUP107DPE  | Deep Purple    |            |
| SUP107TH   | Thistle        |            |
| SUP107PL   | Plum           |            |
| SUP107MG   | Mardi Gras     |            |
| SUP107CP   | Carnation Pink |            |

**Canson MI-Teintes Tinted Drawing Papers**

100% pure rag. Produced in France by the famed Les Papiers Canson Company. Colorfast, striking effects with all media. Sheet size: 21" x 29". Swatch book available.

| NO.    | COLOR               | PRICE/SHT |
|--------|---------------------|-----------|
| CAN100 | Lime                | \$2.25    |
| CAN101 | Pale Yellow         |           |
| CAN102 | Azure               |           |
| CAN103 | Dawn Pink           |           |
| CAN104 | Lilac               |           |
| CAN105 | Wave Green          |           |
| CAN106 | Ochre               |           |
| CAN107 | Anise               |           |
| CAN110 | Lily                |           |
| CAN111 | Ivory               |           |
| CAN112 | Eggshell            |           |
| CAN113 | Parma               |           |
| CAN114 | Raspberry           |           |
| CAN115 | Mystical Orange     |           |
| CAN116 | Bordeaux            |           |
| CAN117 | Plum                |           |
| CAN118 | Icy Blue            |           |
| CAN119 | Southern Seas       |           |
| CAN120 | Pearl Gray          |           |
| CAN122 | Flannel Gray        |           |
| CAN130 | Red Earth           |           |
| CAN131 | Twilight            |           |
| CAN133 | Sepia               |           |
| CAN140 | Indigo Blue         |           |
| CAN150 | Cobalt Blue         |           |
| CAN335 | White               |           |
| CAN336 | Sand                |           |
| CAN340 | Oyster              |           |
| CAN343 | Pearl               |           |
| CAN345 | Dark Gray           |           |
| CAN350 | Honeysuckle         |           |
| CAN352 | Orchid              |           |
| CAN354 | Sky Blue            |           |
| CAN374 | Hemp                |           |
| CAN384 | Buff                |           |
| CAN400 | Canary              |           |
| CAN407 | Cream               |           |
| CAN425 | Stygian Black       |           |
| CAN426 | Moonstone           |           |
| CAN429 | Felt Gray           |           |
| CAN431 | Steel Gray          |           |
| CAN448 | Ivy                 |           |
| CAN453 | Orange              |           |
| CAN470 | Champagne           |           |
| CAN475 | Green               |           |
| CAN480 | Light Green         |           |
| CAN490 | Light Blue          |           |
| CAN495 | Blue                |           |
| CAN500 | Dark Blue           |           |
| CAN501 | Tobacco             |           |
| CAN502 | Bisque              |           |
| CAN503 | Burgundy            |           |
| CAN504 | Amber               |           |
| CAN505 | Red                 |           |
| CAN506 | Poppy Red           |           |
| CAN507 | Violet              |           |
| CAN553 | Cadmium Yellow Deep |           |
| CAN575 | Viridian            |           |
| CAN590 | Royal Blue          |           |
| CAN595 | Turquoise Blue      |           |

103

PAPER, BOARDS, ACETATE

## COLORED PAPERS

continued from p103

### Colored Tissue Paper

Ideal for packaging mock-ups. Each color package contains 8 (20" x 30") sheets of a color. White package contains 12 sheets (20" x 30"). Metallic package contains 6 sheets (20" x 30").

| NO.       | COLOR           | PRICE/PKG |
|-----------|-----------------|-----------|
| GWC135002 | Metallic Silver | \$2.75    |
| GWC135009 | Metallic Gold   | 2.75      |
| GWC14503  | Red             | 1.95      |
| GWC14505  | Black           | 1.95      |
| GWC14507  | Royal           | 1.95      |
| GWC14508  | Green           | 1.95      |
| GWC14510  | Light Blue      | 1.95      |
| GWC14511  | Yellow          | 1.95      |
| GWC14513  | Purple          | 1.95      |
| GWC14514  | White           | 1.95      |
| GWC14522  | Burgundy        | 1.95      |
| GWC14567  | Orange          | 1.95      |

### Chromalux White Paper and Cover

Cast coated with a slick, high-gloss finish. A perfect surface for clean, razor-sharp ruling. Can be scored, folded, printed, embossed, and foil stamped for comps, dummies or finished pieces. Cover weights available coated one side.

| NO.       | THICKNESS | SIZE        | PRICE |
|-----------|-----------|-------------|-------|
| CLXWE1227 | 12 pt.    | 19½" x 27½" | 3.59  |
| CLXWE1239 | 12 pt.    | 27½" x 39¾" | 4.75  |

### Poster Board 12 pt. High Gloss

A 12 pt. cover stock, cast coated on one side with lacquer-based pigments for a brilliantly colored, high-gloss finish. Accepts all types of printing, silk-screening and foil stamping. Scores, die cuts and embosses with excellent results. Ideal for package and publication mock-ups, displays, and comps. Size: 20" x 26".

| NO.    | COLOR      | PRICE/SHEET |
|--------|------------|-------------|
| CLXC45 | Red        | \$3.75      |
| CLXC55 | Green      |             |
| CLXC61 | Light Blue |             |
| CLXC66 | Dark Blue  |             |
| CLXC74 | Dark Gray  |             |
| CLXC77 | Black      |             |
| CLXM81 | Gold       |             |
| CLXM80 | Silver     |             |

### Medium Weight Cover Stock

Smooth finish, plain edges. Color is same on both sides. Medium weight 80 lb.

| NO.       | SIZE      | COLOR     | PRICE  |
|-----------|-----------|-----------|--------|
| AIFCS40IV | 26" x 40" | Ivory     | \$2.55 |
| AIFCS40WE | 26" x 40" | White     | 2.55   |
| AIFCS40RD | 26" x 40" | Red       | 2.55   |
| AIFCS40DB | 26" x 40" | Dark Blue | 2.55   |

### Cover Stock-Black

| NO.         | SIZE      | WEIGHT        | PRICE  |
|-------------|-----------|---------------|--------|
| AIFCS40BKHW | 26" x 40" | 130 lb. Heavy | \$5.25 |
| AIFCS40BK   | 26" x 40" | 65 lb. Light  | 3.25   |

### Grandee Papers

An extraordinary rich range of unique colors in a strong textured 80 lb. acid-free cover stock. The brilliance, even in the darker tones, enhances the many uses for these papers. 26" x 40", 125 Shts/Ctn.

| NO.      | COLOR         | PRICE/SHEET |
|----------|---------------|-------------|
| AIFG38W  | White         | \$2.75      |
| AIFG38CG | Charcoal Gray | \$2.75      |
| AIFG38B  | Black         | \$2.75      |

## SPECIAL PAPERS



### Grafix Translucent & Deluxe Vellums

Grafix translucent vellums are the hottest trend in papers today. Used for laser and copy printing as well as all types of paper crafts; stamping, embossing, punching, crimping, folding and painting. Grafix has added New Clear 30 lb. Ink Jet Printable Vellum to their selection. Size 8½" x 11". Sold in pack of 100 sheets.

| NO.        | DESCRIPTION                 | PRICE/PK |
|------------|-----------------------------|----------|
| K100VCL17  | Clear Vellum 17 lb.         | \$24.19  |
| K100VCL24  | Clear Vellum 24 lb.         | 24.19    |
| K100VCLJ30 | Clear Vellum 30 lb.         | 33.59    |
| K100VCL48  | Clear Vellum 48 lb.         | 33.59    |
| K100VMG30  | Magenta Vellum 30 lb.       | 24.19    |
| K100VB29   | Black Vellum 29 lb.         | 24.19    |
| K100VBL30  | Blush Vellum 30 lb.         | 24.19    |
| K100VCM17  | Columns Vellum 17 lb.       | 24.19    |
| K100VFL17  | Fineline Vellum 17 lb.      | 24.19    |
| K100VG30   | Gold Vellum 30 lb.          | 24.19    |
| K100VIR24  | Iridescent Vellum 24 lb.    | 24.19    |
| K100VLG30  | Leaf Green 30 lb.           | 24.19    |
| K100VLY27  | Lemon Yellow Vellum 27 lb.  | 24.19    |
| K100VMW29  | Marble White Vellum 29 lb.  | 24.19    |
| K100VSB30  | Surf Blue Vellum 30 lb.     | 24.19    |
| K100VOX17  | Oxford Vellum 17 lb.        | 24.19    |
| K100VP30   | Platinum Vellum 30 lb.      | 33.59    |
| K100VPM29  | Parchment Vellum 29 lb.     | 24.19    |
| K100VSO30  | Spring Ochre Vellum 30 lb.  | 24.19    |
| K100VVP27  | Violet Purple Vellum 27 lb. | 24.19    |

### Metallic Foil Papers

| NO.  | DESCRIPTION     | PRICE  |
|------|-----------------|--------|
| MFPS | 20" x 26" Sheet | \$2.79 |
| MFPR | 26" x 25" Roll  | 15.99  |

| NO. | COLOR     | NO. | COLOR       |
|-----|-----------|-----|-------------|
| SGN | Green     | RC  | Red Copper  |
| RD  | Red       | DG  | Dull Gold   |
| DB  | Dark Blue | DS  | Dull Silver |

### Dry-Stik Pressure-Sensitive Metallic Foil Papers

A (0.00035) foil laminated to 45 lb. paper. Peels off its backing sheet and adheres to paper, cardboard, and other substrates. Ideal for comping and mocking up package designs, book covers, point-of-purchase displays and other designs where foil is used.

| NO.     | COLOR       | PRICE/SHEET |
|---------|-------------|-------------|
| AIFDSDG | Dull Gold   | \$4.55      |
| AIFDSDS | Dull Silver | 4.55        |
| AIFDSBG | Gold        | 4.55        |
| AIFDSBS | Silver      | 4.55        |

### Construction Paper

An inexpensive wood pulp stock for varied uses. 50 assorted colored sheets to a package.

| NO.       | SIZE      | PRICE/PACKAGE |
|-----------|-----------|---------------|
| AIFCP12AS | 9" x 12"  | \$3.15        |
| AIFCP18AS | 12" x 18" | 6.30          |
| AIFCP24AS | 18" x 24" | 12.60         |

### Black and White Construction Paper

Same as above in Black (BK) or White (WE), 50 sheets per package, per color.

| NO.     | SIZE      | PRICE/PACKAGE |
|---------|-----------|---------------|
| AIFCP12 | 9" x 12"  | \$3.15        |
| AIFCP18 | 12" x 18" | 6.30          |
| AIFCP24 | 18" x 24" | 12.60         |

### Color Construction Paper

Brightly colored, all-purpose, high bulk, high strength, smooth textured heavyweight construction paper with long, strong fibers that cut clean and fold evenly without cracking.

| NO.       | COLOR    | SIZE      | PRICE/PACK |
|-----------|----------|-----------|------------|
| AIFCP12BE | Blue     | 9" x 12"  | \$3.15     |
| AIFCP18BE | Blue     | 12" x 18" | 6.30       |
| AIFCP24BE | Blue     | 18" x 24" | 12.60      |
| AIFCP12BN | Brown    | 9" x 12"  | 3.15       |
| AIFCP18BN | Brown    | 12" x 18" | 6.30       |
| AIFCP12GN | Green    | 9" x 12"  | 3.15       |
| AIFCP18GN | Green    | 12" x 18" | 6.30       |
| AIFCP24GN | Green    | 18" x 24" | 12.60      |
| AIFCP12SB | Sky Blue | 9" x 12"  | 3.15       |
| AIFCP18SB | Sky Blue | 12" x 18" | 6.30       |
| AIFCP12OE | Orange   | 9" x 12"  | 3.15       |
| AIFCP18OE | Orange   | 12" x 18" | 6.30       |
| AIFCP12PK | Pink     | 9" x 12"  | 3.15       |
| AIFCP18PK | Pink     | 12" x 18" | 6.30       |
| AIFCP12RD | Red      | 9" x 12"  | 3.15       |
| AIFCP18RD | Red      | 12" x 18" | 6.30       |
| AIFCP24RD | Red      | 18" x 24" | 12.60      |
| AIFCP12YW | Yellow   | 9" x 12"  | 3.15       |
| AIFCP18YW | Yellow   | 12" x 18" | 6.30       |
| AIFCP24YW | Yellow   | 18" x 24" | 12.60      |

### Saral Artists' Transfer Papers

Works like carbon paper without the danger of smudging. Produces a sharp, delicate grease-free line that is easily wiped off. Takes ink and wash perfectly! Dispenser boxes. Rolls: 12½" x 12".

| NO.     | COLOR         | USE   | PRICE   |
|---------|---------------|---|---------|
| SARALBE | Non-Photo Bl  | For mechanicals, paste-ups, etc.                  | \$17.99 |
| SARALG  | Graphite      | For all-purpose "tracing-down"                    | 17.99   |
| SARALRD | Red           | For glossy acetates, glass, photos and photostats | 17.99   |
| SARALWE | White         | For all reverse work                              | 17.99   |
| SARALYW | Yellow        | For tracing on dark backgrounds                   | 17.99   |
| SARALTP | Trial Package | 5 sample sheets; one of each color                | 6.99    |

## SPECIAL PAPERS

### MIRRICARD/MIRRIWRAP COLORS



Black



Blue



Copper



Gold



Green



Pink



Purple



Red



Silver

### Mirricard Metallic Card Stock

Custom made in England, this highly decorative card stock is the closest thing to a "mirror" on board. This highly reflective metallic sheet has a coating on one side and is matte white on the other. Available in 9 colors, Mirricard can be printed using a variety of processes such as letterpress, screen-printing, offset, foil stamping, embossing and debossing. (12pt - 270 gsm - 100 lb.)

12 PT. - 39.375" X 27.5"

| NO.       | COLOR         | PRICE   |
|-----------|---------------|---------|
| MIRC12BK  | Black         | \$11.50 |
| MIRC12BL  | Blue          |         |
| MIRC12CPR | Copper        |         |
| MIRC12EG  | Emerald Green |         |
| MIRC12GD  | Gold          |         |
| MIRC12PK  | Pink          |         |
| MIRC12PUR | Purple        |         |
| MIRC12RD  | Red           |         |
| MIRC12SLV | Silver        |         |

### Mirriwrap Metallic Paper

Custom made in England, this highly decorative paper is the closest thing to a "mirror" on paper. This highly reflective metallic sheet has a coating on one side and is matte white on the other. Available in 9 colors, Mirriwrap is used for greeting cards, luxury packaging, invitations, scrapbooking, envelope linings and as a decorative accent or layering paper. (4 pt - 100 gsm - 67 lb.)

4PT - 19.6" X 27.5"

| NO.      | COLOR         | PRICE  |
|----------|---------------|--------|
| MIRW4BK  | Black         | \$4.95 |
| MIRW4BL  | Blue          |        |
| MIRW4CPR | Copper        |        |
| MIRW4EG  | Emerald Green |        |
| MIRW4GD  | Gold          |        |
| MIRW4PK  | Pink          |        |
| MIRW4PUR | Purple        |        |
| MIRW4RD  | Red           |        |
| MIRW4SLV | Silver        |        |

Prices are subject to change.

## ILLUSTRATION BOARDS

### Bainbridge Illustration Boards

No. 80 (Textured) Cold Press: Surface is medium textured, toothy and slightly grained. A fine rag quality, all-purpose board, adaptable for illustrations and art work in all media. Superwhite, high rag surface. Ideal for markers, air brush, watercolor, tempera, acrylics, charcoal, pencil.

No. 172 (Smooth) Hot Press: Facing paper (professional quality, high rag) is an especially receptive finish for pen & ink work, transfer lettering and paste-up mechanicals. Surface can be stripped for repositioning. Fine erasing characteristics. When ordering, please specify the correct order number for Hot Press or Cold Press (shown above), in addition to the product number shown below. No. BBG172: Hot Press; No. BBG80: Cold Press.

| NO.   | SIZE      | THICKNESS | SHTS/<br>CARTON | PRICE/<br>SHT |
|-------|-----------|-----------|-----------------|---------------|
| 20S   | 15" x 20" | Single    | 50              | \$3.12        |
| 30S   | 20" x 30" | Single    | 25              | 5.87          |
| 2230S | 22" x 30" | Single    | 25              | 6.54          |
| 40S   | 30" x 40" | Single    | 25              | 11.66         |
| 20D   | 15" x 20" | Double    | 25              | 4.19          |
| 30D   | 20" x 30" | Double    | 25              | 8.04          |

### Bainbridge 2000

An extra smooth surface for precise ruling and mechanicals. Surface can be scraped or stripped —also, re-inked after erasures. No feathering or bleeding. Bright white gives superior contrast.

| NO.        | SIZE      | THICKNESS | SHTS/<br>PKG | PRICE/<br>SHT |
|------------|-----------|-----------|--------------|---------------|
| LMX200020S | 15" x 20" | Single    | 50           | \$3.12        |
| LMX200030S | 20" x 30" | Single    | 25           | 5.57          |
| LMX200040S | 30" x 40" | Single    | 25           | 9.86          |
| LMX200030D | 20" x 30" | Double    | 25           | 7.30          |
| LMX200040D | 30" x 40" | Double    | 12           | 13.78         |

### Bainbridge 4000

Premium grade, coated surface is ultra-smooth and bright white. Makes razor sharp rules and edges without feathering, bleeding, or cracking. Board can be re-inked after scraping, erasing or removal of tape and rubber cement.

| NO.        | SIZE      | THICKNESS | SHTS/<br>CARTON | PRICE/<br>SHT |
|------------|-----------|-----------|-----------------|---------------|
| LMX400020S | 15" x 20" | Single    | 50              | \$3.80        |
| LMX400030S | 20" x 30" | Single    | 25              | 6.75          |
| LMX400040S | 30" x 40" | Single    | 25              | 12.05         |

### Bainbridge 6000

A premium, super white, conservation quality illustration board. Single thickness.

| NO.        | SIZE      | SHTS/<br>PACKAGE | PRICE/<br>SHT |
|------------|-----------|------------------|---------------|
| LMX600020S | 15" x 20" | 50               | \$7.25        |
| LMX600030S | 20" x 30" | 25               | 13.05         |
| LMX600040S | 30" x 40" | 25               | 21.75         |

### Metro "Gray Back" Illustration Boards

An economy illustration board for general artwork and mounting. Smooth white surface has a clean gray back with no printing. Hot Press (HP) finish only.

| NO.       | SIZE      | THICKNESS | SHTS/<br>CARTON | PRICE/<br>SHT |
|-----------|-----------|-----------|-----------------|---------------|
| AIFMHP20S | 15" x 20" | Single    | 50              | \$2.33        |
| AIFMHP30S | 20" x 30" | Single    | 25              | 4.57          |
| AIFMHP40S | 30" x 40" | Single    | 25              | 8.92          |

## MAT BOARDS

### Bainbridge Alparag Artcare

For those who prefer using rag board, Alparag Artcare offers the largest selection of 100% cotton museum quality matboards in the industry. Available in a broad range of classic and subtle colors, Alparag is constructed of four equal plies and offers superior rigidity and strength. Select references are available in 2-ply barrier paper for a multitude of uses: as an interleaving in a storage box, as a protective barrier between an image and standard mountboard or as a dustcover. Alparag 8-ply references are ideal for dramatic bevels or extra-strong mounting. Oversized boards, ideal for museum framing, are also available.

| NO    | DESCRIPTION    | SIZE      | SHTS/<br>CARTON | PRICE/<br>SHT |
|-------|----------------|-----------|-----------------|---------------|
| BBGAR | 1-ply          | 32" × 40" | 100             | \$6.24        |
| BBGAR | 2-ply          | 32" × 40" | 50              | 11.73         |
| BBGAR | 4-ply (Whites) | 32" × 40" | 25              | 22.39         |
| BBGAR | 4-ply (Lights) | 32" × 40" | 25              | 23.71         |
| BBGAR | 4-ply (Darks)  | 32" × 40" | 25              | 26.69         |
| BBGAR | 4-ply (Whites) | 40" × 60" | 10              | 42.64         |
| BBGAR | 4-ply (Lights) | 40" × 60" | 10              | 44.27         |
| BBGAR | 4-ply (Darks)  | 32" × 40" | 10              | 64.42         |
| BBGAR | 8-ply (Whites) | 32" × 40" | 12              | 48.46         |
| BBGAR | 8-ply (Lights) | 32" × 40" | 12              | 51.55         |
| BBGAR | 8-ply (Darks)  | 32" × 40" | 12              | 62.67         |
| BBGAR | 8-ply (Whites) | 40" × 60" | 5               | 89.47         |
| BBGAR | 8-ply (Darks)  | 40" × 60" | 5               | 127.77        |

\* = also available in 40" × 60"

Note: Colors may vary from the actual mat board color due to four-color process printing.

| NO.    | COLOR                 |
|--------|-----------------------|
| 8601   | White Standard 1-Ply  |
| 8603   | White Standard 2-Ply  |
| 8605   | White Standard 4-Ply  |
| 8606   | Ivory Standard 4-Ply  |
| 8629   | Fresh Hay 4-Ply       |
| 8632   | White 2-Ply           |
| 8634   | White 4-Ply •         |
| 8634.8 | White 8-Ply •         |
| 8640   | Antique White 4-Ply • |
| 8640.8 | Antique White 8-Ply   |
| 8642   | Cream 4-Ply •         |
| 8642.8 | Cream 8-Ply           |
| 8643   | Dove Grey 4-Ply       |
| 8644   | Ebony 4-Ply •         |
| 8644.8 | Ebony 8-Ply           |
| 8645   | Ivory 4-Ply •         |
| 8645.8 | Ivory 8-Ply           |
| 8646   | Khaki 4-Ply •         |
| 8646.8 | Khaki 8-Ply           |
| 8647   | Pearl White 4-Ply •   |
| 8647.8 | Pearl White 8-Ply •   |
| 8648   | Taupe 4-Ply           |
| 8649   | White 1-Ply           |
| 8651   | Colonial Blue 4-Ply   |
| 8652   | Heritage White 4-Ply  |
| 8653   | Pure White 8-Ply •    |
| 8654   | Pure White 2-Ply      |
| 8655   | Pure White 4-Ply •    |
| 8656   | Natural White 4-Ply • |
| 8656.8 | Natural White 8-Ply   |
| 8660   | White 8-Ply           |
| 8663   | Natural Black 4-Ply • |
| 8663.8 | Natural Black 8-Ply • |
| 8664   | Special Cream 4-Ply • |

| NO.    | COLOR                  |
|--------|------------------------|
| 8664.8 | Special Cream 8-Ply    |
| 8665   | Tumbleweed 4-Ply       |
| 8665.8 | Tumbleweed 8-Ply       |
| 8666   | Sand 4-Ply             |
| 8667   | Colonial Cream 4-Ply • |
| 8668   | Ecru 4-Ply             |
| 8669   | Black Shadow 4-Ply •   |
| 8669.8 | Black Shadow 8-Ply     |
| 8673   | Deep Sage 4-Ply •      |
| 8673.8 | Deep Sage 8-Ply        |
| 8674   | Stone 4-Ply            |
| 8675   | Heather Brown 4-Ply •  |
| 8676   | Lichen 4-Ply           |
| 8677   | Tusk 4-Ply             |
| 8678   | Coir 4-Ply             |
| 8688   | Glacier White 4-Ply    |
| 8690   | Toasted Wheat 4-Ply    |

### BAINBRIDGE ALPHAMAT ARTCARE

Alphamat Artcare offers the most extensive selection of museum quality preservation boards available today. Featuring the latest colors, Alphamat has a pure solid white core for clean, consistent bevels, making it ideal for creative cuts. It is fade- and bleed-resistant with guaranteed color consistency.

Alphamat Artcare Vellums offer a complete range of smooth-surfaced, specially-sized neutrals, ideal for French matting, washlines and other decorative surface treatments.

Alphamat Artcare Color Core offers the ultimate in protection and design options with museum quality matboards on a variety of colored cores, all featuring Artcare archival protection.

| NO    | DESCRIPTION   | SIZE      | SHTS/<br>CARTON | PRICE/<br>SHT |
|-------|---|-----------|-----------------|---------------|
| BBGAB | Alphamat Solid Colors                                   | 32" × 40" | 25              | \$16.79       |
| BBGAB | Alphamat Solid Colors                                   | 40" × 60" | 2               | 33.53         |
| BBGAB | Alphamat Color Core, Impression, Earthtones, Parchments | 32" × 40" | 25              | 18.24         |
| BBGAB | Alphamat Color Core, Impression, Earthtones, Parchments | 40" × 60" | 2               | 36.54         |

Alphamat Artcare is ideal for both conservation and general framing, including original works of art, limited edition prints, photography, heirloom pieces, newsprint, historical documents, needle art, decorative art, posters and graphics, gallery and exhibit framing and anything that requires long-term preservation.

\* = also available in 40" × 60"

Note: Colors may vary from the actual mat board color due to four-color process printing.

| NO.  | COLOR             |
|------|-------------------|
| 8002 | Silver            |
| 8003 | Gold •            |
| 8004 | Warm Gold •       |
| 8005 | Copper            |
| 8006 | Brushed Silver    |
| 8007 | Brushed Pale Gold |
| 8008 | Brushed Gold •    |
| 8009 | Patina Gold       |
| 8010 | Patina Copper •   |
| 8012 | Brushed Onyx •    |
| 8013 | Matador           |
| 8014 | Grey Quartz       |

| NO.   | COLOR          |
|-------|----------------|
| 8015  | Smoky Topaz    |
| 8016  | Jademond       |
| 8017  | Rubellite      |
| 8018  | Blue Tanzanite |
| 8019  | Orange Pop     |
| 8020  | Red Rave       |
| 8021  | Stadium Blue   |
| 8022  | Lemondrop      |
| 8023  | Yellow Mustard |
| 8024  | Purple Passion |
| 8025  | Real Teal      |
| 8026  | Kelly Green    |
| 8027  | Mango          |
| 8028  | Mango Mousse   |
| 8029  | Carnation      |
| 8030  | Pink Carnation |
| 8031  | Thistle        |
| 8032  | Thistle Down   |
| 8033  | Azure          |
| 8034  | Azure Blue     |
| 8035  | Bermuda        |
| 8036  | Bermuda Mist   |
| 8037  | Lime           |
| 8038  | Lime Froth     |
| 8050  | Demure Rose    |
| 8052  | Precious Pink  |
| 8053  | Gentle Green   |
| 8054  | Honeysuckle    |
| 8055  | Ardent Blue    |
| 8056  | Balmy Blue     |
| 8103  | Citron         |
| 8104  | Sage           |
| 8105  | Blue Iris      |
| 8107  | Peacock        |
| 8108  | Sherry •       |
| 8109  | Desert Rose    |
| 8111  | Purple Orchid  |
| 8112  | Celestial Blue |
| 8118  | White Canvas   |
| 8119  | Ivory Canvas   |
| 8120  | Pearl Canvas   |
| 8126  | Sandy Cove     |
| 8129  | Sea Grass      |
| 8134  | Thai Sapphire  |
| 8137  | Rice White     |
| 8139  | Opal           |
| 8140  | Topaz          |
| 8141  | Smithsonite    |
| 8142  | Azurite        |
| 8150  | Sisal          |
| 8151  | Palm           |
| 8153  | Jute           |
| 8155V | Fiori          |
| 8156V | Prato          |
| 8157V | Verde          |
| 8158V | Sole           |
| 8159V | Mare           |
| 8160V | Luna           |
| 8161V | Terra          |
| 8162V | Fango          |
| 8180  | Mocha          |

**MAT BOARDS**

*continued on p108*

| NO.   | COLOR                 |
|-------|-----------------------|
| 8181  | Matte Black •         |
| 8182  | Rain Forest Green     |
| 8183  | Darkest Blue          |
| 8184  | Black Cherry          |
| 8185  | Clay                  |
| 8186  | Light Stone           |
| 8187  | Silver Sage           |
| 8189  | Toasted Almond        |
| 8191  | Antique Taupe         |
| 8192  | Fiery Red             |
| 8250  | Doeskin Leather       |
| 8251  | Moccasin Leather      |
| 8253  | Nappa Green Leather   |
| 8254  | Cowhide Leather       |
| 8255  | Bluebuck Leather      |
| 8256  | Calfskin Leather      |
| 8257  | Buckskin Leather      |
| 8258  | Nubuck Leather        |
| 8259  | Sable Leather         |
| 8260  | Ice White •           |
| 8261  | Goosedown             |
| 8262  | Polar White           |
| 8263  | Beeswax               |
| 8264  | Wild Olive            |
| 8265  | Tabasco               |
| 8266  | Loam                  |
| 8301  | Ivory Black/Black •   |
| 8302  | Pebble Blue/Black     |
| 8304  | Flint/Black           |
| 8305  | Featherstone/Black    |
| 8306  | Matte White/Black •   |
| 8307  | Frost/Black           |
| 8308  | Sea Mist/Black        |
| 8309  | Etruscan Bronze/Black |
| 8310  | Tartan Green/Black    |
| 8311  | Baroque Ruby/Black    |
| 8312  | Tapestry/Black        |
| 8313  | Snowflake/Black •     |
| 8314  | Talc/Black            |
| 8315  | Fairfield White/Black |
| 8317  | Steel Grey/Black      |
| 8318  | Malacca/Black         |
| 8319  | Teal Grey/Black       |
| 8320  | Taupe/Black           |
| 8321  | Brushed Onyx Sable •  |
| 8401  | Biscotti              |
| 8408  | Saffron               |
| 8409  | Amber                 |
| 8412  | Green Olive           |
| 8414  | Begonia               |
| 8415  | Riviera Red •         |
| 8417  | Venetian Blue •       |
| 8418  | Charleston Green      |
| 8420  | Softly Pink           |
| 8422  | Lem 'n Lime           |
| 8423  | Shadow                |
| 8424  | Chameleon             |
| 8426  | Parakeet              |
| 8427  | Red Clay              |
| 8428  | Papaya •              |
| 8429  | Orchid                |
| 8431V | Antique               |
| 8432V | Angora •              |
| 8433V | Jet •                 |

| NO.   | COLOR              |
|-------|--------------------|
| 8434V | Coal               |
| 8435V | Chrome             |
| 8436V | Honeycomb          |
| 8437V | Clover             |
| 8438V | Chalk •            |
| 8440  | Aubergine          |
| 8441  | Chaps •            |
| 8442  | Kona               |
| 8443  | Teak               |
| 8444  | Pecan              |
| 8445  | Fiddlehead •       |
| 8446  | Raffia             |
| 8447  | Black Spruce •     |
| 8448  | Jalapeno •         |
| 8449  | Cypress            |
| 8450  | Denim Blue •       |
| 8451  | Mulberry           |
| 8452  | Salsa              |
| 8453  | CayenneE           |
| 8454  | Marigold •         |
| 8455  | Maize              |
| 8456  | Fog                |
| 8458  | Smoke              |
| 8460  | Quaker Grey •      |
| 8461  | Gun Metal          |
| 8462V | Wheat •            |
| 8463V | Spanish White •    |
| 8464V | Matte White •      |
| 8465V | Igloo •            |
| 8466  | Frost •            |
| 8467  | French White •     |
| 8468  | Medieval Forest •  |
| 8469  | Stuart Green •     |
| 8470  | Etruscan Bronze •  |
| 8471  | Dynasty Celadon •  |
| 8473  | Florentine Lapis • |
| 8474  | Persian Sapphire • |
| 8475  | Olympian Blue      |
| 8478  | Romanesque Grape   |
| 8479  | Imperial Plum •    |
| 8480  | Gothic Amethyst    |
| 8483  | Baroque Ruby •     |
| 8484  | Venetian Garnet •  |
| 8485  | Renaissance Gold • |
| 8486  | Arabian White •    |
| 8487  | Palomino •         |
| 8488  | Sand Dune •        |
| 8489  | Lasso              |
| 8490  | Pueblo             |
| 8491  | Prairie Dust       |
| 8494  | Wigwam             |
| 8495  | Desert Dawn        |
| 8499  | Cornflower         |
| 8500  | Shell •            |
| 8502  | Mimosa •           |
| 8503  | Chamois •          |
| 8504  | Shadow Blue •      |
| 8505  | Teal Grey •        |
| 8506  | Tuscan Brown •     |
| 8509  | Malacca •          |
| 8510  | Annapolis Blue     |
| 8511  | Sea Mist •         |
| 8512  | Sorrel             |
| 8513  | Celadon            |

| NO.   | COLOR             |
|-------|-------------------|
| 8514  | Sonora            |
| 8515  | Dover Grey •      |
| 8516  | Pampas •          |
| 8517  | Ivory Black •     |
| 8518  | Ash •             |
| 8519  | Snowflake •       |
| 8520  | Talc •            |
| 8521  | Fairfield White • |
| 8522  | Cobblestone •     |
| 8525  | Almond •          |
| 8526  | Indigo •          |
| 8527  | Almadine •        |
| 8528  | Garnet •          |
| 8531  | Spice             |
| 8533  | Brittany •        |
| 8534  | Flemish Blue      |
| 8535  | Moroccan Sand •   |
| 8536  | Heather Mist •    |
| 8539  | Briarwood •       |
| 8540  | Tartan Green •    |
| 8544V | Photo Grey        |
| 8545  | Catawba           |
| 8550  | Calabash          |
| 8551  | Baltic Green •    |
| 8552  | Carmine •         |
| 8555  | Nimbus •          |
| 8556  | Kirkwood          |
| 8559V | Photo White •     |
| 8560  | Sultan Sand •     |
| 8563  | Taupe •           |
| 8564  | Powder Rose       |
| 8565  | Olde Rose         |
| 8566  | Lilac             |
| 8567  | Dusk Grey •       |
| 8569  | Poppy             |
| 8570  | Ice Blue •        |
| 8571  | Hunter Green •    |
| 8572  | Blue Sruce        |
| 8573  | Tapestry •        |
| 8574  | Sapphire •        |
| 8575  | Violet            |
| 8577  | Blush             |
| 8582  | Lupine            |
| 8583  | Pale Mauve        |
| 8584  | Perwinkle •       |
| 8585  | Jonquil •         |
| 8586  | Iris              |
| 8587  | Bellflower Blue   |
| 8589  | Teal              |
| 8591  | Right Red         |
| 8592  | Bordeaux •        |
| 8593  | Steel Grey •      |
| 8594  | Delta Clay        |
| 8597  | Flagstone         |
| 8599  | Twilight          |
| 8801  | Featherstone •    |
| 8802  | Aztec Sand •      |
| 8804  | Bedrock           |
| 8805  | Flint             |
| 8806  | Pebble Blue       |
| 8809  | Feldspar          |
| 8812  | Zinc              |
| 8815  | Muslin            |
| 8816  | Flax              |

Prices are subject to change.

212.337.8600

107

PAPER, BOARDS, ACETATE

## MAT BOARDS

| NO.  | COLOR              |
|------|--------------------|
| 8822 | Sandcastle         |
| 8824 | Ironstone          |
| 8835 | Aztec Sand/Buf     |
| 8836 | Palomino/Buf       |
| 8837 | Tuscan Brown/Buf   |
| 8841 | Ash/Grey           |
| 8850 | Arabian Fossil     |
| 8855 | Baltic Hide        |
| 8880 | Tapestry/Blue      |
| 8881 | Feldspar/Blue      |
| 8883 | Ice Blue/Blue      |
| 8885 | Snowflake/Blue     |
| 8893 | Tartan Green/Green |

## Vellums

\* = Also available in 40" x 60"  
Note: Colors may vary from the actual mat board color due to four color process printing.

| NO.  | COLOR           |
|------|-----------------|
| 8463 | Spanish White • |
| 8465 | Igloo           |
| 8438 | Chalk •         |
| 8464 | Matte White •   |
| 8559 | Photo White •   |
| 8432 | Angora •        |
| 8437 | Clover          |
| 8462 | Wheat           |
| 8431 | Antique         |

continued from p107

| NO.  | COLOR      |
|------|------------|
| 8436 | Honeycomb  |
| 8435 | Chrome     |
| 8544 | Photo Grey |
| 8434 | Coal       |
| 8433 | Jet •      |
| 8155 | Fiori      |
| 8156 | Prato      |
| 8157 | Verdi      |
| 8158 | Sole       |
| 8159 | Mare       |
| 8160 | Luna       |
| 8161 | Terra      |
| 8162 | Fango      |

## MOUNTING BOARDS



### Bainbridge Lightweight Black on Black

Similar surface and core to AIF black on black board except thinner. 22-point weight allows for easier travel with multiple boards.

| NO.         | SIZE      | SHTS/PKG | PRICE       |
|-------------|-----------|----------|-------------|
| LMX37136    | 11" x 14" | 25       | \$37.27/Pkg |
| LMX299C1420 | 14" x 20" | 100      | 2.85/sht    |

### Bainbridge 50/50 Total Gray Mounting Board

A versatile 2-in-1 board; one side is charcoal gray, the other, T.V. gray. A solid gray core results in uniformly gray edges and bevels. Single-thick.

| NO.      | SIZE      | SHTS/CARTON | PRICE/SHT |
|----------|-----------|-------------|-----------|
| LMXTG205 | 15" x 20" | 50          | \$2.56    |
| LMXTG305 | 20" x 30" | 25          | 4.62      |
| LMXTG405 | 32" x 40" | 25          | 8.50      |

### All White Mount Boards

A semi-gloss, clay coated surface on two sides with a solid white core.

| NO.      | THICKNESS | SIZE      | PRICE  |
|----------|-----------|-----------|--------|
| ALW10P28 | 10-Ply    | 22" x 28" | \$2.69 |
| ALW14P28 | 14-Ply    | 22" x 28" | 3.19   |
| ALW14P44 | 14-Ply    | 28" x 44" | 5.99   |
| ALW14P40 | 14-Ply    | 30" x 40" | 6.29   |
| ALW28P28 | 28-Ply    | 22" x 28" | 6.49   |
| ALW28P44 | 28-Ply    | 28" x 44" | 12.49  |
| ALW28P40 | 28-Ply    | 30" x 40" | 12.79  |

### AIF White Mount Boards

Semi-gloss. Clay coated on one side, dull white on the other. Suitable for mounting and presentations.

| NO.      | SIZE      | THICKNESS | SHTS/PKG | PRICE/SHT |
|----------|-----------|-----------|----------|-----------|
| AIFWMB14 | 11" x 14" | 14-Ply    | 50       | \$8.89    |
| AIFWMB28 | 22" x 28" | 14-Ply    | 50       | 2.79      |
| AIFWMB44 | 28" x 44" | 14-Ply    | 25       | 4.59      |
| AIFWMB40 | 30" x 40" | 14-Ply    | 25       | 4.79      |
| AIFWMB60 | 40" x 60" | 28-Ply    | 25       | 13.95     |

### AIF Black Mat Boards

Non-pebbled, smooth surface. Reverse side is white.

| NO.     | SIZE      | THICKNESS | SHTS/PKG | PRICE/SHT |
|---------|-----------|-----------|----------|-----------|
| AIFBM10 | 8" x 10"  | Single    | 50       | \$9.99    |
| AIFBM14 | 11" x 14" | Single    | 50       | 1.79      |
| AIFBM20 | 15" x 20" | Single    | 50       | 2.30      |
| AIFBM30 | 20" x 30" | Single    | 25       | 3.92      |
| AIFBM40 | 30" x 40" | Single    | 25       | 7.27      |
| AIFBM60 | 40" x 60" | Single    | 25       | 20.95     |

### AIF Black on Black Presentation Board

Solid black to the core—cut a squared or beveled edge and it will uniformly match the black of the board's surface. Slightly toothy texture reduces sheen. Excellent for presentations. Green black on one side, red black on the other side.

| NO.      | SIZE      | THICKNESS | SHTS/CTN | PRICE/SHT |
|----------|-----------|-----------|----------|-----------|
| AIFBB10S | 8" x 10"  | Single    | 50       | \$8.89    |
| AIFBB14S | 11" x 14" | Single    | 50       | 1.59      |
| AIFBB20S | 15" x 20" | Single    | 50       | 2.93      |
| AIFBB30S | 20" x 30" | Single    | 25       | 5.24      |
| AIFBB40S | 32" x 40" | Single    | 25       | 9.03      |
| AIFBB30D | 20" x 30" | Double    | 25       | 6.48      |
| AIFBB40D | 32" x 40" | Double    | 12       | 12.04     |

### Soho Black on Black Presentation Board

Solid black board, similar to AIF Black on Black board but with green black surface on both sides. Single weight only.

| NO.     | SIZE      | SHTS/CARTON | PRICE/SHT |
|---------|-----------|-------------|-----------|
| SOHO20S | 15" x 20" | 50          | \$3.69    |
| SOHO30S | 20" x 30" | 25          | 6.39      |
| SOHO40S | 32" x 40" | 25          | 10.99     |

### Carolina Blanks

The combination of a double coat on one side and a solid bleached base on the other, gives Carolina C15 Blanks strength, rigidity, foldability, and tear resistance. Affordable printing is achieved for window displays, counter cards, signs, mobiles, point of purchase, advertising specialties, heavy weight covers and other uses.

| NO.       | SIZE      | THICKNESS       | SHTS/CTN | PRICE  |
|-----------|-----------|-----------------|----------|--------|
| AIFCB3PLY | 23" x 29" | 3-Ply (.15 pt.) | 500      | \$1.69 |
| AIFCB4PLY | 23" x 29" | 4-Ply (.18 pt.) | 400      | 1.69   |
| AIFCB     | 23" x 29" | 6-Ply (.24 pt.) | 300      | 1.75   |
| AIFCB40   | 30" x 40" | 6-Ply (.24 pt.) | 100      | 2.75   |

### Carolina Coated Cover

The same coating and characteristics as Carolina Blanks but in lighter weights.

| NO.       | SIZE      | THICKNESS | SHTS/PKG | PRICE/SHT |
|-----------|-----------|-----------|----------|-----------|
| AIFCC826  | 20" x 26" | 8 pt.     | 1,200    | \$7.5     |
| AIFCC840  | 26" x 40" | 8 pt.     | 600      | 1.50      |
| AIFCC1226 | 20" x 26" | 12 pt.    | 800      | .95       |
| AIFCC1240 | 26" x 40" | 12 pt.    | 400      | 1.99      |

### Metallic Foil Board

This 20" x 26" board has a highly reflective surface mounted to a durable 10 pt. board. 25 sheet per package.

| NO.      | COLOR     | PRICE/SHT |
|----------|-----------|-----------|
| GRMFBDBL | Dark Blue | \$1.69    |
| GRMFBGLD | Gold      |           |
| GRMFBSLV | Silver    |           |
| GRMFBGRN | Green     |           |
| GRMFBRED | Red       |           |

### AIF Railroad Boards

6-ply thickness; Semi-gloss finish. Size: 22" x 28".

| NO.     | COLOR         | PRICE/SHT |
|---------|---------------|-----------|
| AIFRBBK | Black         | \$1.80    |
| AIFRBBE | Dark Blue     |           |
| AIFRBCY | Canary Yellow |           |
| AIFRBGY | Gray          |           |
| AIFRBGN | Kelly Green   |           |
| AIFRBRD | Red           |           |
| AIFRBRB | Royal Blue    |           |
| AIFRBCR | Cardinal Red  |           |
| AIFRBOE | Orange        |           |

## MOUNTING BOARDS

### News (Chip) Boards

A rigid, all-purpose board for packaging, easels, construction models, etc. Suitable for dry or wet mounting. Usually brownish gray.

| NO.      | SIZE      | THICKNESS | SHEETS/ PKG | PRICE/ SHEET |
|----------|-----------|-----------|-------------|--------------|
| AIFCB40S | 30" × 40" | 1/16"     | 25          | \$1.98       |
| AIFCB40D | 30" × 40" | 3/32"     | 18          | 3.98         |
| AIFCB40T | 30" × 40" | 3/16"     | 10          | 5.98         |

### Kraft (Tan) Corrugated Boards

Standard stiff thickness; facing on both sides. Used for packaging, display work, packing, dummies, etc. Cuts easily. 25 sheets per package.

| NO.     | SIZE      | PRICE/SHT |
|---------|-----------|-----------|
| KFTBD26 | 21" × 26" | \$1.40    |
| KFTBD36 | 24" × 36" | 1.50      |
| KFTBD48 | 36" × 48" | 2.85      |
| KFTBD96 | 48" × 96" | 12.95     |

| NO.     | SIZE              | NO. IN SHEETS BUNDLE | PRICE/ BUNDLE |
|---------|-------------------|----------------------|---------------|
| KFTBD11 | 8 1/4" × 11 1/4"  | 100                  | \$24.50       |
| KFTBD14 | 11 1/2" × 14 3/4" | 100                  | 40.50         |
| KFTBD17 | 14 3/4" × 17 1/2" | 50                   | 29.50         |
| KFTBD20 | 16 1/4" × 20 3/4" | 50                   | 31.50         |
| KFTBD25 | 21" × 25"         | 50                   | 41.50         |
| KFTBD40 | 30" × 40"         | 50                   | 48.50         |

### TV Mount Boards

Gray on one side, black on the other. 16-ply.

| NO.     | SIZE      | SHTS/PKG | PRICE/SHT |
|---------|-----------|----------|-----------|
| AIFTV20 | 15" × 20" | 50       | \$2.95    |
| AIFTV30 | 20" × 30" | 25       | 4.55      |
| AIFTV40 | 30" × 40" | 25       | 7.95      |

### Oak Tag

Smooth, semi-gloss surface. Popularly used for arts & crafts, children's projects and a variety of other applications. Tan, 24" × 36".

| NO.    | PRICE  |
|--------|--------|
| OAKTAG | \$1.25 |

### Heavyweight Gray Mount Board

28-ply. Gray on one side, white on the other.

| NO.      | SIZE      | SHEETS/PKG | PRICE/SHT |
|----------|-----------|------------|-----------|
| AIFGW40D | 30" × 40" | 12         | \$10.86   |
| AIFGW60D | 40" × 60" | 12         | 23.50     |

## MODEL BUILDING BOARDS

### Architectural Taskboard

Ideal for scale models. Board is 1/8" or 3/32" thick. Taskboard is easy to cut, sandable, formable, absorbs glue for strong invisible joints and is photogenic.

| NO.       | SIZE              | PRICE  |
|-----------|-------------------|--------|
| TKB2030   | 20" × 30" × 1/8"  | \$6.00 |
| TKB203032 | 20" × 30" × 3/32" | 7.25   |

### Stylite Foam

Unfaced polystyrene foam that is primarily used in applications where thicker dimensional look is to be achieved. Ideal for exterior as well as interior uses. The foam is manufactured with flame retardant additives and are UL classified R4712N. Cellulite Unfaced polystyrene foam with flame-resistant expanded polystyrene foam, UL classified, Bryx foam plastics, R4712 (N).

| NO.       | SIZE          | PRICE   |
|-----------|---------------|---------|
| STY8X18X2 | 8" × 18" × 2" | \$15.99 |

## PLASTIC BOARDS

### Sintra Board

This rigid closed-cell, homogenous foamed, polyvinyl chloride (PVC) board has no surface liners. It's "plastic-like" surface is a low satin that provides excellent results. Sintra can be trimmed, die-cut, milled, routed, laminated, sawed, glued, welded, screwed, nailed—even thermoformed and heat bent. It has a flame resistant formulation as all thicknesses pass the UL94-VO and 5V test. Sintra in 4 mm or less is rated a Class 1 for flame spread and smoke development. Sintra can be used for outdoor applications, as it is resistant to weather.

| NO.        | COLOR | SIZE      | THICKNESS | PRICE   |
|------------|-------|-----------|-----------|---------|
| AIFS8963WE | White | 48" × 96" | 3 mm      | \$59.00 |
| AIFS8963BK | Black | 48" × 96" | 3 mm      | 69.00   |
| AIFS8966WE | White | 48" × 96" | 6 mm      | 115.00  |
| AIFS8966BK | Black | 48" × 96" | 6 mm      | 129.00  |

### Duraplast I Board

This heavy-duty faced board is perfect for exhibits, lamination, P.O.P. displays, screenprinting, sets and props plus more. Duraplast I has a high-density white or black fine celled extruded polystyrene foam center, with a .015 polystyrene plastic cap sheet. Carton quantity is 25 for 3/16" and 12 for 1/2" board.

| NO.         | COLOR | SIZE      | THICKNESS | PRICE   |
|-------------|-------|-----------|-----------|---------|
| FOM96DPW316 | White | 48" × 96" | 3/16"     | \$84.95 |
| FOM96DPB316 | Black | 48" × 96" | 3/16"     | 95.95   |
| FOM96DPW12  | White | 48" × 96" | 1/2"      | 104.95  |
| FOM96DPB12  | Black | 48" × 96" | 1/2"      | 119.95  |

### Art Foam

This lightweight white polystyrene foam panel is designed for signage, display, and exhibit industries. Art Foam can be cut with a hot wire cutter, knife, blade saw, cut awl, high-speed router or fine-tooth band saw. It is perfect for making three-dimensional letters, graphics and free form shapes.

| NO.        | SIZE      | THICKNESS | SHEETS/CARTON | PRICE    |
|------------|-----------|-----------|---------------|----------|
| FOMARTF961 | 48" × 96" | 1"        | 3             | \$119.95 |

### Fasad Flame Resistant Foam Board

This board is used for exhibits and displays where decorative flame retardant materials are required. It is designed to resist ignition and combustion. Fasad FR has an improved Tappi T461 om-84 tested flame resistant liner that offers the best graphic reproduction qualities of any inherent flame resistant liners available. Fasad FR produces a clean edge when straight cut or beveled cut because of the small-celled extruded polystyrene foam core. It has a 12-point liner with a smooth clay-coated surface. Fasad is white, lightweight, rigid, and warp resistant.

| NO.        | SIZE      | THICKNESS | SHEETS/CARTON | PRICE   |
|------------|-----------|-----------|---------------|---------|
| FOMFR96316 | 48" × 96" | 3/16"     | 25            | \$84.95 |
| FOMFR9612  | 48" × 96" | 1/2"      | 12            | 104.95  |
| FOMFR961   | 48" × 96" | 1"        | 6             | 189.95  |

## FOAM BOARDS



### Foam Boards

A sandwich laminate of polystyrene foam between white, clay-coated smooth paperboard facings with white centers. Extremely lightweight, yet rigid and strong. White surface excellent for poster colors, markers, inks. Easily cut with razor blade. Popular for mounting art work or photos and for displays and exhibits. Foam boards must be packed carefully to prevent damage. There is a handling charge on orders for less than package lots.

| NO.     | SIZE      | THICKNESS | SHTS/<br>CARTON | PRICE/<br>SHT |
|---------|-----------|-----------|-----------------|---------------|
| FOM14   | 11" x 14" | 3/16"     | 24              | \$3.72        |
| FOM20   | 15" x 20" | 3/16"     | 100             | 3.25          |
| FOM30   | 20" x 30" | 3/16"     | 50              | 6.60          |
| FOM36   | 24" x 36" | 3/16"     | 25              | 9.53          |
| FOM40   | 30" x 40" | 3/16"     | 25              | 12.33         |
| FOM3240 | 32" x 40" | 3/16"     | 25              | 13.17         |
| FOM60   | 40" x 60" | 3/16"     | 25              | 24.51         |
| FOM96   | 48" x 96" | 3/16"     | 25              | 42.44         |

| NO.      | SIZE      | THICKNESS | SHTS/<br>CARTON | PRICE/<br>SHT |
|----------|-----------|-----------|-----------------|---------------|
| FOM301/8 | 20" x 30" | 1/8"      | 50              | \$6.60        |
| FOM401/8 | 32" x 40" | 1/8"      | 25              | 12.33         |
| FOM601/8 | 40" x 60" | 1/8"      | 25              | 24.51         |
| FOM961/8 | 48" x 96" | 1/8"      | 25              | 42.44         |

| NO.       | SIZE      | THICKNESS | SHTS/<br>CARTON | PRICE/<br>SHT |
|-----------|-----------|-----------|-----------------|---------------|
| FOM301/2  | 20" x 30" | 1/2"      | 25              | \$9.98        |
| FOM401/2  | 30" x 40" | 1/2"      | 25              | 19.90         |
| FOM601/2  | 40" x 60" | 1/2"      | 12              | 39.79         |
| FOM961/2X | 48" x 96" | 1/2"      | 12              | 75.69         |

### Insite Biodegradable Foam Board

Formulated with "bio resins", this foam board will decompose in landfills within one to five years. Regular foam can take up to 450 years to biodegrade. The foam is faced with a smooth bright white paper. Insite is highly warp resistant and maintains its thickness during mounting and laminating.

| NO.        | SIZE      | THICKNESS | SHTS/<br>CARTON | PRICE   |
|------------|-----------|-----------|-----------------|---------|
| BIOFOM30   | 20" x 30" | 3/16"     | 25              | \$10.95 |
| BIOFOM36   | 24" x 36" | 3/16"     | 25              | 12.50   |
| BIOFOM3240 | 32" x 40" | 3/16"     | 25              | 19.75   |
| BIOFOM48   | 36" x 48" | 3/16"     | 25              | 25.00   |
| BIOFOM60   | 40" x 60" | 3/16"     | 25              | 37.25   |
| BIOFOM96   | 48" x 96" | 3/16"     | 25              | 59.25   |

### Black on Black Foam Board

Black foam board with a black center. Lightweight, rigid, smooth black surface. Warp resistant board cuts easily. Makes a dramatic design statement.

| NO.        | SIZE      | THICKNESS | SHTS/<br>CARTON | PRICE/<br>SHT |
|------------|-----------|-----------|-----------------|---------------|
| FOM20BB    | 15" x 20" | 3/16"     | 100             | \$3.95        |
| FOM30BB    | 20" x 30" | 3/16"     | 50              | 7.87          |
| FOM36BB    | 24" x 36" | 3/16"     | 25              | 14.95         |
| FOM40BB    | 32" x 40" | 3/16"     | 25              | 15.50         |
| FOM60BB    | 40" x 60" | 3/16"     | 25              | 28.81         |
| FOM96BB    | 48" x 96" | 3/16"     | 25              | 49.94         |
| FOM301/2BB | 20" x 30" | 1/2"      | 10              | 13.83         |
| FOM401/2BB | 32" x 40" | 1/2"      | 25              | 27.64         |
| FOM601/2BB | 40" x 60" | 1/2"      | 12              | 55.33         |
| FOM961/2BB | 48" x 96" | 1/2"      | 12              | 106.18        |

### Black Foam Board

Same as regular foam boards but with one surface in black.

| NO.        | SIZE      | THICKNESS | SHTS/<br>CARTON | PRICE/<br>SHT |
|------------|-----------|-----------|-----------------|---------------|
| FOM30BK    | 20" x 30" | 3/16"     | 10              | \$9.56        |
| FOM40BK    | 30" x 40" | 3/16"     | 25              | 23.00         |
| FOM60BK    | 40" x 60" | 3/16"     | 25              | 27.05         |
| FOM96BK    | 48" x 96" | 3/16"     | 25              | 53.90         |
| FOM96BK1/2 | 48" x 96" | 1/2"      | 10              | 89.95         |

### Colored Foam Board

Same sturdy foam board as the regular foam boards, but with surfaces offered in a range of colors and metallics. 30" x 40" is limited to (\*\*) marked colors only! 20" x 30" is available in all the colors listed below!

| NO.     | SIZE      | THICKNESS | SHTS/<br>CARTON | PRICE/<br>SHT |
|---------|-----------|-----------|-----------------|---------------|
| FOM30   | 20" x 30" | 3/16"     | 10              | 9.56          |
| FOM40** | 32" x 40" | 3/16"     | 10              | 23.00         |

| NO.  | COLOR     | NO.  | COLOR      |
|------|-----------|------|------------|
| BE** | Blue      | SG   | Soft Green |
| FA   | Fuchsia   | SS   | Sandstone  |
| GD** | Gold      | SL   | Soft Lilac |
| GN** | Green     | SS   | Sandstone  |
| GS   | Greystone | SR** | Silver     |
| GY** | Gray      | TN   | Tan        |
| OE   | Orange    | YW** | Yellow     |
| RD   | Red       |      |            |

### Medium TAK White Foam Board

Identical to the regular foam board, but this one has self-stick adhesive surfaces with peel-away liners. 3/16" thick. White.

| NO.     | SIZE      | SHTS/CARTON | PRICE/SHT |
|---------|-----------|-------------|-----------|
| FOMMT30 | 20" x 30" | 25          | \$11.26   |
| FOMMT40 | 32" x 40" | 25          | 23.06     |

### Hi TAK White Foam Board

Same as above, but with a higher strength adhesive. 3/16" thick.

| NO.     | SIZE      | SHTS/CARTON | PRICE/SHT |
|---------|-----------|-------------|-----------|
| FOMHT30 | 20" x 30" | 25          | \$9.49    |
| FOMHT36 | 24" x 36" | 25          | \$11.50   |
| FOMHT40 | 30" x 40" | 25          | 19.50     |
| EZW60   | 40" x 60" | 25          | 39.50     |
| EZW96   | 48" x 96" | 25          | 79.50     |

### Medium TAK Black on Black Foam Board

Same as black on black foam board, but with self-stick adhesive surfaces with peel-away liners. 3/16" thick.

| NO.       | SIZE      | SHTS/CARTON | PRICE/SHT |
|-----------|-----------|-------------|-----------|
| FOMMT30BB | 20" x 30" | 10          | \$13.59   |
| FOMMT40BB | 30" x 40" | 25          | 26.63     |

### Hi TAK Black on Black Foam Board

Same as the black on black Quick Stick but with Hi Tak self-stick adhesive surfaces.

| NO.       | SIZE      | SHTS/CARTON | PRICE/SHT |
|-----------|-----------|-------------|-----------|
| FOMHT30BB | 20" x 30" | 10          | \$11.95   |
| FOMHT40BB | 32" x 40" | 25          | 22.50     |
| EZSB60    | 40" x 60" | 25          | 52.00     |
| EZSB96    | 48" x 60" | 25          | 95.00     |

### Heat-Activated Coated Foam Board

Identical to the regular foam board, but with a heat-activated adhesive coating on both sides of the board, allowing it to be dry-mounted to papers and cardboards. Gives excellent results in framing, mounting and model-making.

| NO.         | SIZE      | THICKNESS | SHTS/<br>CARTON | PRICE/<br>SHT |
|-------------|-----------|-----------|-----------------|---------------|
| FOMHAM40    | 32" x 40" | 3/16"     | 25              | \$17.91       |
| FOMHAM60    | 40" x 60" | 3/16"     | 25              | 33.74         |
| FOMHAM4896  | 48" x 96" | 3/16"     | 25              | 34.95         |
| FOMHAM401/8 | 32" x 40" | 1/8"      | 25              | 19.70         |

### Smooth Mount Foam Board

Smooth Mount is a new foam mounting board that's great for digital prints as well as traditional mounting. Made from enhanced extruded polystyrene foam, a full 3/4" thick, it has improved rigidity, hardness and warp resistance. The 12-point clay-coated surfaces are ultra smooth, making it ideal for mounting high quality digital images.

| NO.        | COLOR | SIZE      | SHTS/CRTN | PRICE   |
|------------|-------|-----------|-----------|---------|
| SMW30401/4 | White | 30" x 40" | 20        | \$13.31 |
| SMW40601/4 | White | 40" x 60" | 20        | 27.48   |
| SMW48961/4 | White | 48" x 96" | 20        | 51.05   |
| SMB32401/4 | Black | 32" x 40" | 20        | 15.97   |
| SMB40601/4 | Black | 40" x 60" | 20        | 29.79   |
| SMB48961/4 | Black | 48" x 96" | 20        | 55.65   |

### Gatorfoam Board

The most rigid and durable foam-board available. Its polystyrene foam center is faced on both sides with laminated Luxcell, a wood fiber veneer. Moisture resistant board can be cut, routed, machined or milled. For use in exhibits, displays, photo mounting, signage, theater sets and other applications requiring lightweight strength. Size: 48" x 96".

| NO.         | COLOR | THICKNESS | SHTS/<br>CARTON | PRICE/<br>SHT |
|-------------|-------|-----------|-----------------|---------------|
| FOM96GB1/2  | Black | 1/2"      | 12              | \$119.95      |
| FOM96GB3/16 | Black | 3/16"     | 15              | 79.95         |
| FOM96GK3/16 | Kraft | 3/16"     | 15              | 79.95         |
| FOM96GW1/2  | White | 1/2"      | 12              | 119.95        |
| FOM96GW3/16 | White | 3/16"     | 15              | 79.95         |

### Heat Activated Gatorfoam Board

Same board as regular Gatorfoam, but with a heat-activated coating. Size: 48" x 96", 3/16" thick.

| NO.          | COLOR | SHTS/<br>CARTON | PRICE/<br>SHT |
|--------------|-------|-----------------|---------------|
| FOMHAG96B316 | Black | 15              | \$89.95       |
| FOMHAG96W316 | White | 15              | 89.95         |

### Bainbridge UltraPrint Ink Jet Receptive Foam Board

For direct printing from inkjet printers. Bainbridge UltraPrint boards eliminate the process of manually laminating printed images. This rigid media product features a high quality matte surface paper with a superior ink jet coating. This combination results in extraordinary image quality that is designed for both Piezo and Thermal Head ink delivery systems.

| NO.        | SIZE      | THICKNESS | SHTS/<br>CARTON | PRICE/<br>SHT |
|------------|-----------|-----------|-----------------|---------------|
| BBGJUR3240 | 32" x 40" | 3/16"     | 25              | \$7.63        |
| BBGJUR406C | 40" x 60" | 3/16"     | 25              | 15.21         |